

Site Information:

Project: Wind Monitoring
 Location: Jaluit High School
 Elevation: 4

Sensor Information:

1 NRG #40 Anem. m/s
 2 NRG #40 Anem. m/s
 3 NRG #40 Anem. m/s
 4 No SCM Installed
 5 No SCM Installed
 6 No SCM Installed
 7 #200P Wind Vane
 8 #200P Wind Vane
 9 NRG #110S Temp C
 10 Licor Pyran W/sqm
 11 BP-20 Barom. mb
 12 volts
 13 NRG #40 Anem. m/s
 14 NRG #40 Anem. m/s
 15 NRG #40 Anem. m/s

6/19/2012 to 4/12/2013**Summary Report**

SITE 8208

Jaluit

Channel	1	2	3				7	8	9	10	11	12	13	14	15
Height	3464 m	3300 m	2000 m	-----	-----	-----	3200 m	0	3 m	3 m	2 m	0 m	0	0	0
Units	m/s	m/s	m/s	-----	-----	-----	deg	deg	C	W/sqm	mb	volts	m/s	m/s	m/s
Intervals with Valid Data	42786	42786	42786				42786	42786	42786	42786	42786	42786	42786	42786	42786
Average Filtered Data	6.66	6.75	6.47				66.27	123.3	28.39	220.92	1041.46	13.19	0.4	0.4	0.4
Average for All Data	6.66	6.75	6.47				66.27	123.3	28.39	220.92	1041.46	13.19	0.4	0.4	0.4
Min Interval Average	0.3	0.3	0.3						21.1	0	650	10.8	0.4	0.4	0.4
Date of Min Interval	9/22/2012	9/22/2012	9/22/2012						7/16/2012	9/21/2012	7/6/2012	3/8/2013	9/21/2012	9/21/2012	9/21/2012
Time of Min Interval	1:30:00 AM	1:30:00 AM	1:30:00 AM						12:40:00 AM	6:50:00 PM	4:50:00 PM	7:30:00 AM	9:00:00 AM	9:00:00 AM	9:00:00 AM
Max Interval Average	20.3	20.5	19.2						33.1	1277	1085.6	13.9	0.4	83.9	0.4
Date of Max Interval	12/18/2012	12/18/2012	12/18/2012						9/21/2012	10/16/2012	12/6/2012	9/25/2012	9/21/2012	11/12/2012	9/21/2012
Time of Max Interval	5:50:00 PM	5:50:00 PM	5:50:00 PM						3:00:00 PM	1:00:00 PM	6:40:00 PM	3:30:00 PM	9:00:00 AM	12:10:00 AM	9:00:00 AM
Average Interval SD	0.61	0.59	0.64				6.1	0.72	0.09	33.27	0.44	0	0	0.03	0
Min Sample	0.3	0.3	0.3						20.4	0	650	10.4	0.4	0.4	0.4
Date of Min Sample	9/21/2012	9/21/2012	9/21/2012						7/16/2012	9/21/2012	7/6/2012	3/9/2013	9/21/2012	9/21/2012	9/21/2012
Time of Min Sample	10:30:00 AM	10:30:00 AM	9:00:00 AM						12:30:00 AM	6:40:00 PM	4:40:00 PM	11:30:00 PM	9:00:00 AM	9:00:00 AM	9:00:00 AM
Max Sample	23.4	23.8	23						52.9	1351.7	1086.2	13.9	0.7	97.9	0.7
Date of Max Sample	1/5/2013	1/5/2013	12/18/2012						3/21/2013	9/24/2012	12/6/2012	9/25/2012	11/7/2012	11/12/2012	2/20/2013
Time of Max Sample	1:00:00 AM	1:00:00 AM	5:50:00 PM						4:50:00 PM	11:00:00 AM	6:30:00 PM	1:20:00 PM	10:20:00 PM	12:10:00 AM	7:10:00 PM
Average Interval TI	0.11	0.11	0.13										0	0	0
Wind Speed Direction							ENE	SE							

Site Information:

Project: Wind Monitoring
Location: Jaluit High School
Elevation: 4

Sensor on channel 1:

NRG #40 Anem. m/s
Height: 3464 m
Serial #: SN:9858

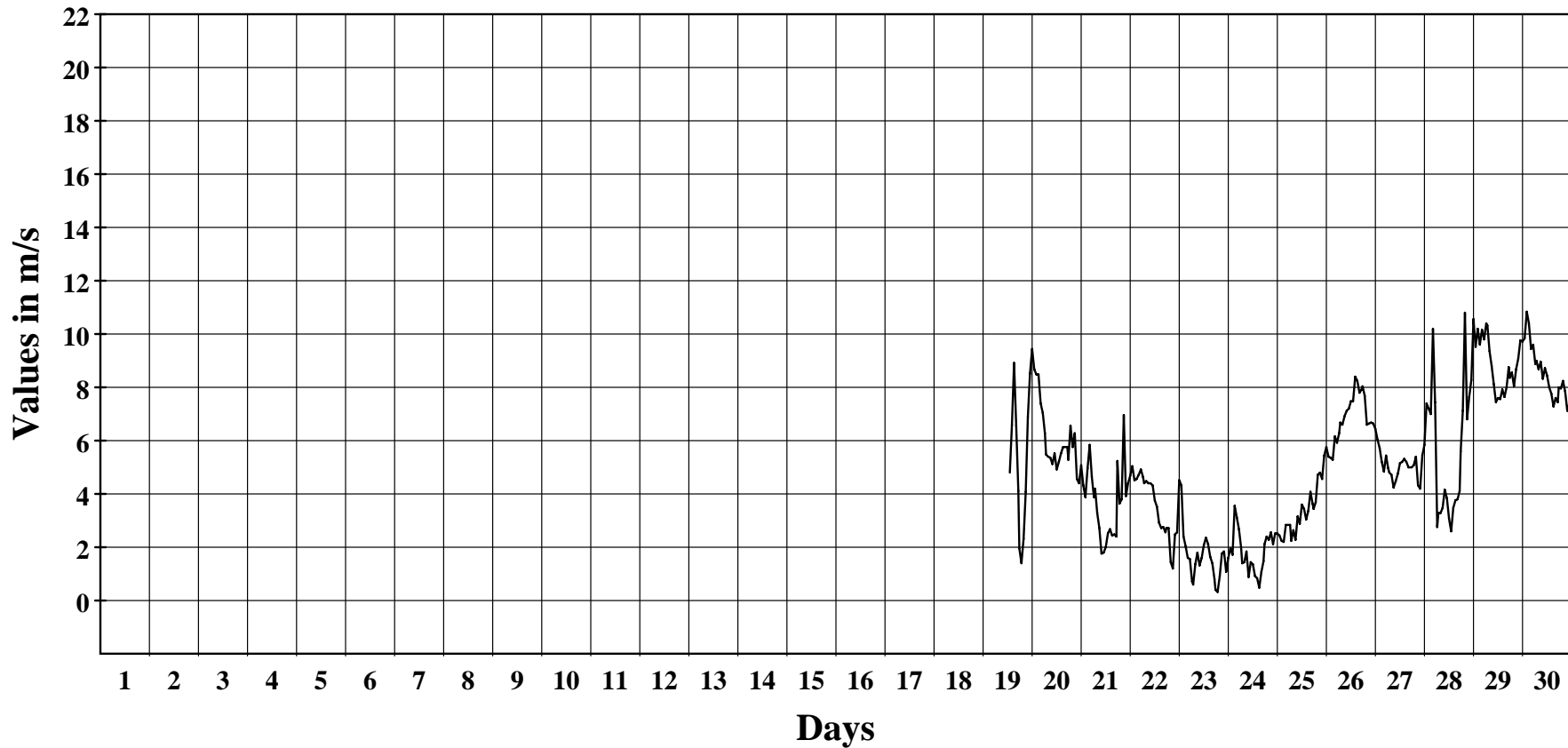
June 2012

Hourly Averages Graph (Windspeed)

SITE 8208

Jaluit

Average Hourly Values



Average Value: 5.0

Site Information:

Project: Wind Monitoring
Location: Jaluit High School
Elevation: 4

Sensor on channel 1:

NRG #40 Anem. m/s
Height: 3464 m
Serial #: SN:9858

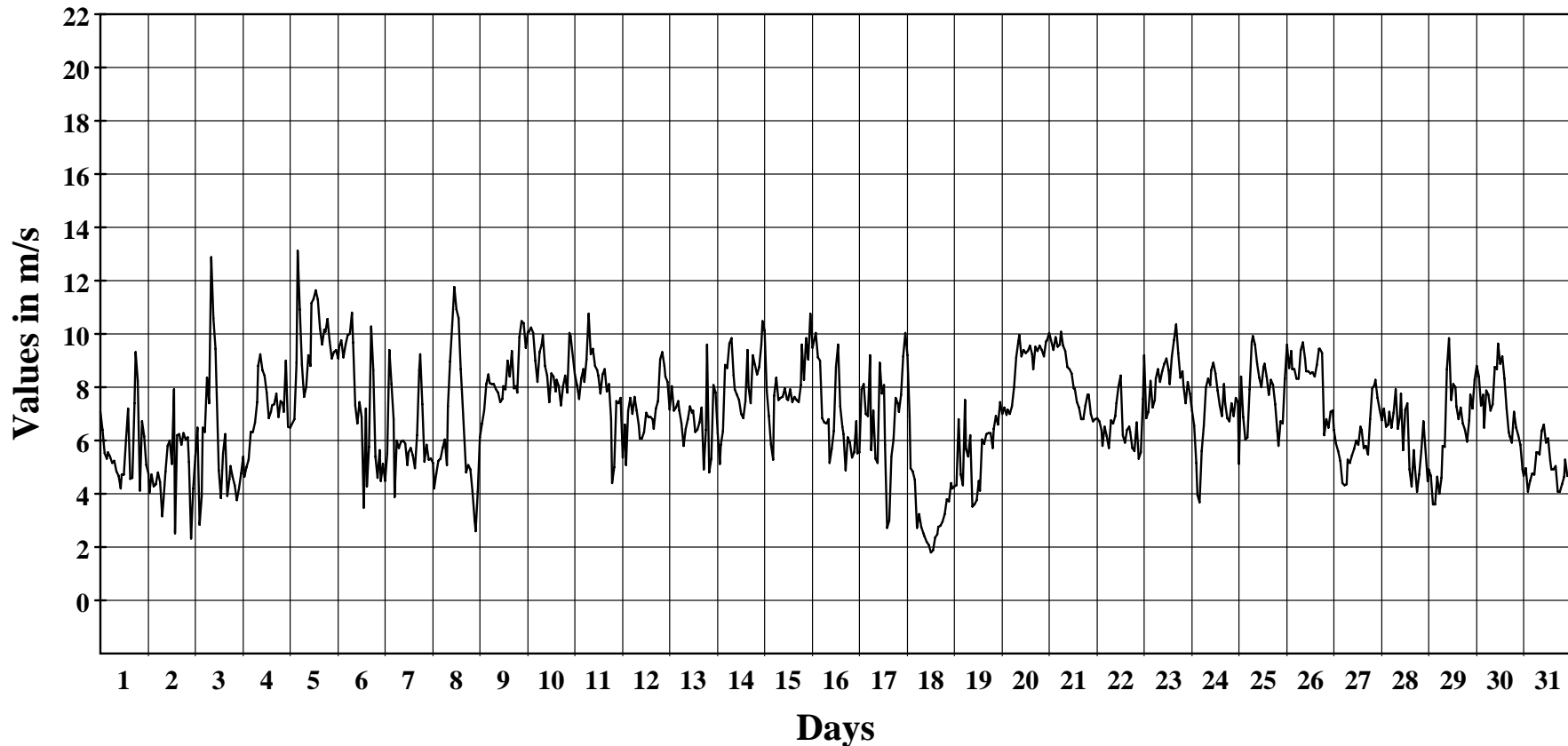
July 2012

Hourly Averages Graph (Windspeed)

SITE 8208

Jaluit

Average Hourly Values



Average Value: 7.0

Site Information:

Project: Wind Monitoring
Location: Jaluit High School
Elevation: 4

Sensor on channel 1:

NRG #40 Anem. m/s
Height: 3464 m
Serial #: SN:9858

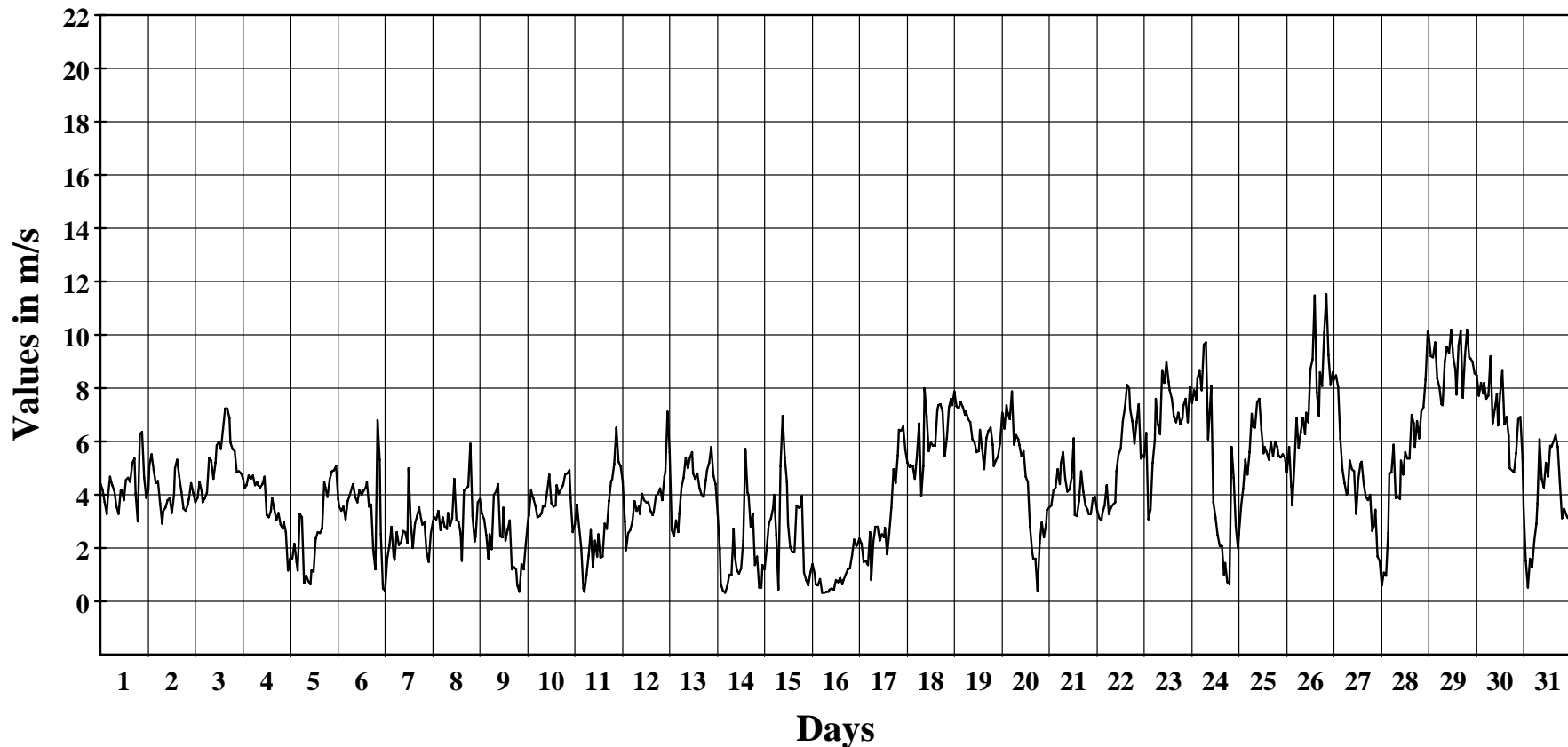
August 2012

Hourly Averages Graph (Windspeed)

SITE 8208

Jaluit

Average Hourly Values



Average Value: 4.4

Site Information:

Project: Wind Monitoring
Location: Jaluit High School
Elevation: 4

Sensor on channel 1:

NRG #40 Anem. m/s
Height: 3464 m
Serial #: SN:9858

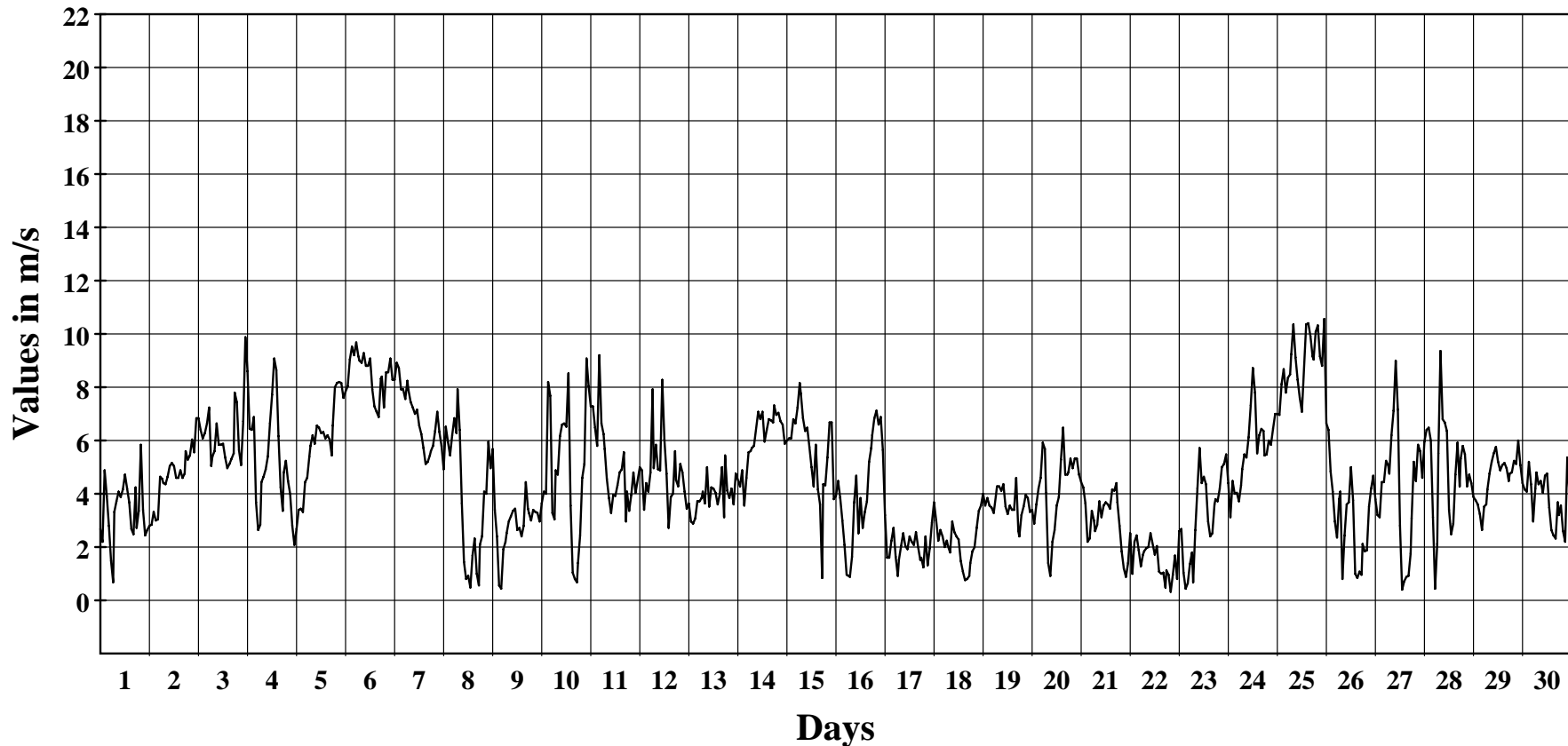
September 2012

Hourly Averages Graph (Windspeed)

SITE 8208

Jaluit

Average Hourly Values



Average Value: 4.6

Site Information:

Project: Wind Monitoring
Location: Jaluit High School
Elevation: 4

Sensor on channel 1:

NRG #40 Anem. m/s
Height: 3464 m
Serial #: SN:9858

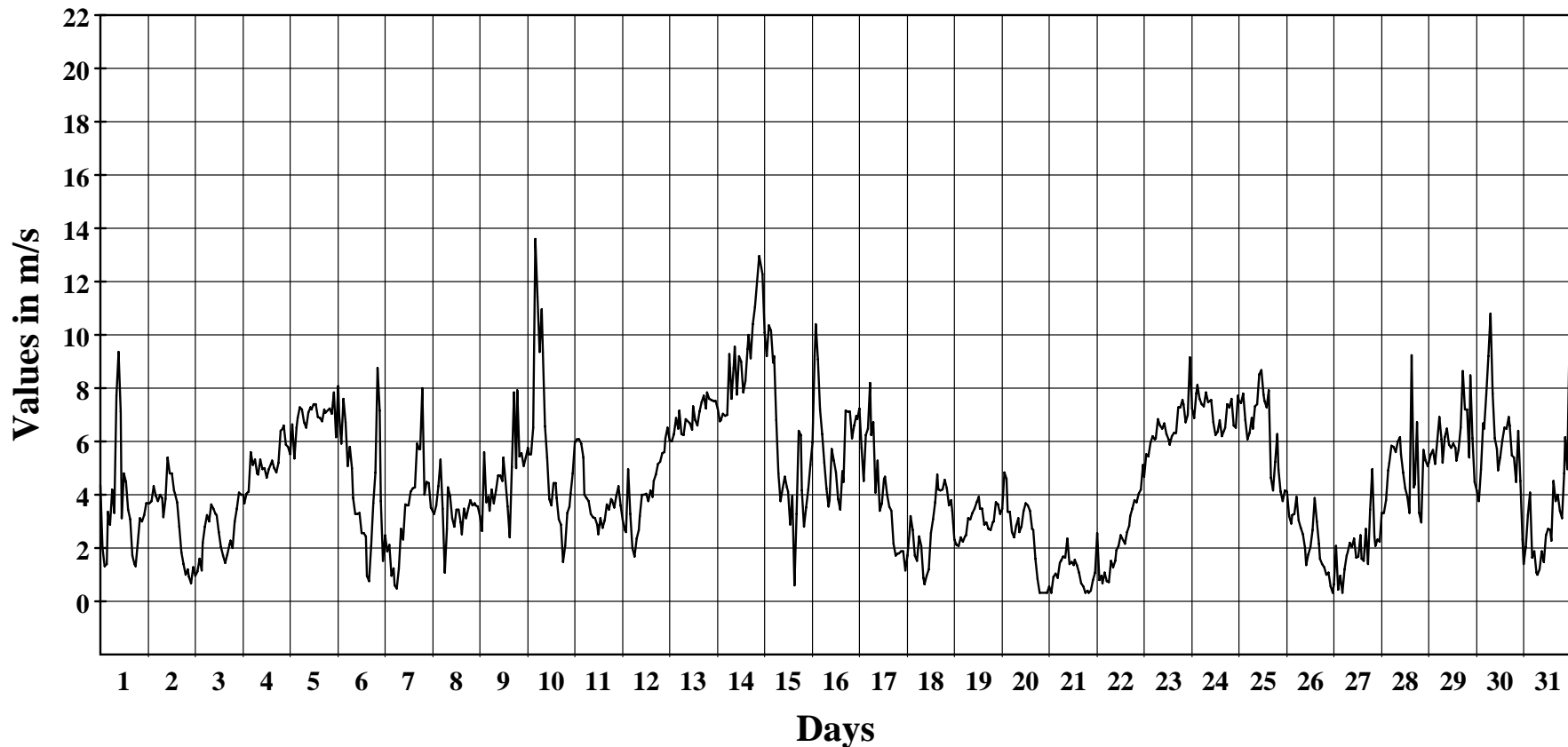
October 2012

Hourly Averages Graph (Windspeed)

SITE 8208

Jaluit

Average Hourly Values



Average Value: 4.5

Site Information:

Project: Wind Monitoring
Location: Jaluit High School
Elevation: 4

Sensor on channel 1:

NRG #40 Anem. m/s
Height: 3464 m
Serial #: SN:9858

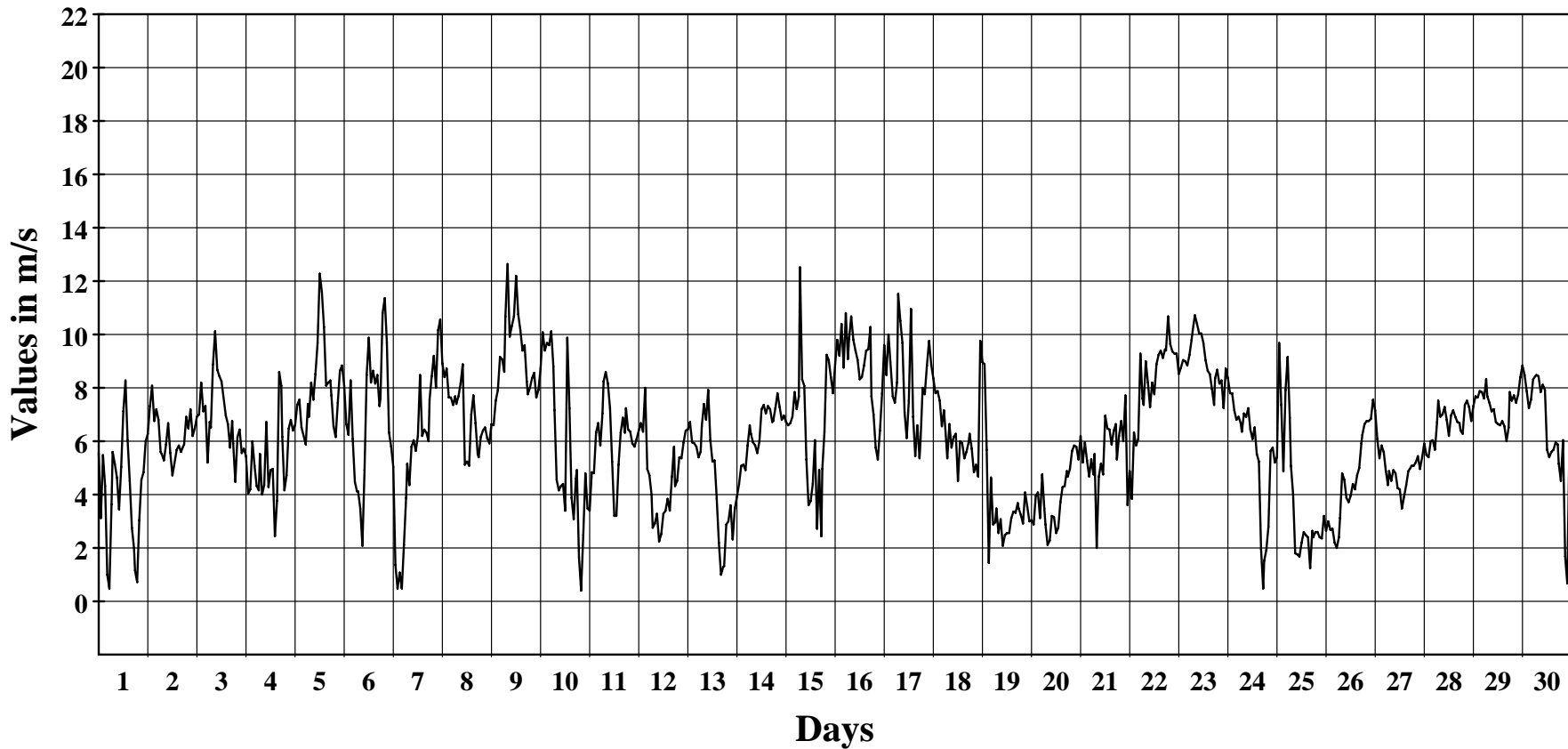
November 2012

Hourly Averages Graph (Windspeed)

SITE 8208

Jaluit

Average Hourly Values



Average Value: 6.2

Site Information:

Project: Wind Monitoring
Location: Jaluit High School
Elevation: 4

Sensor on channel 1:

NRG #40 Anem. m/s
Height: 3464 m
Serial #: SN:9858

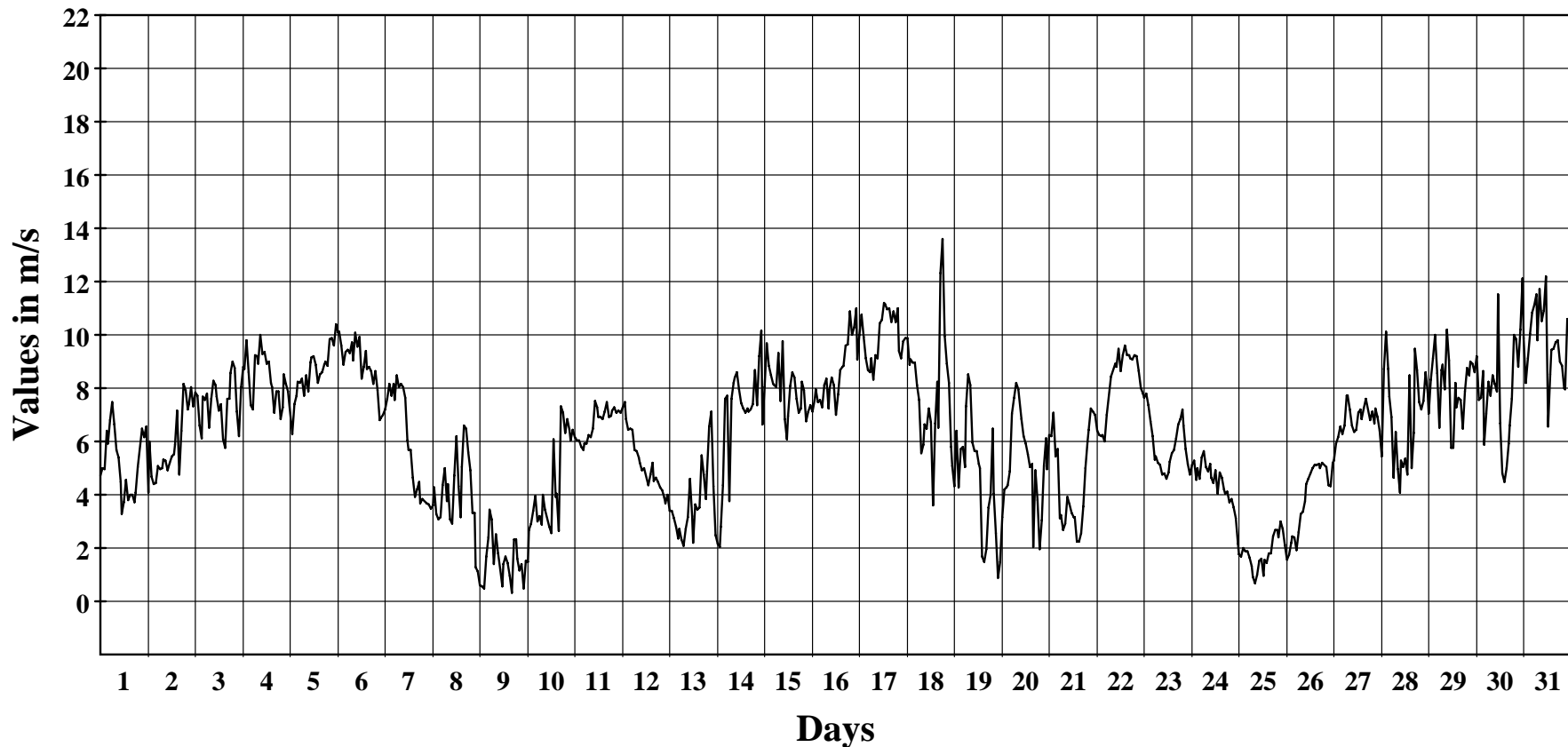
December 2012

Hourly Averages Graph (Windspeed)

SITE 8208

Jaluit

Average Hourly Values



Average Value: 6.3

Site Information:

Project: Wind Monitoring
Location: Jaluit High School
Elevation: 4

Sensor on channel 1:

NRG #40 Anem. m/s
Height: 3464 m
Serial #: SN:9858

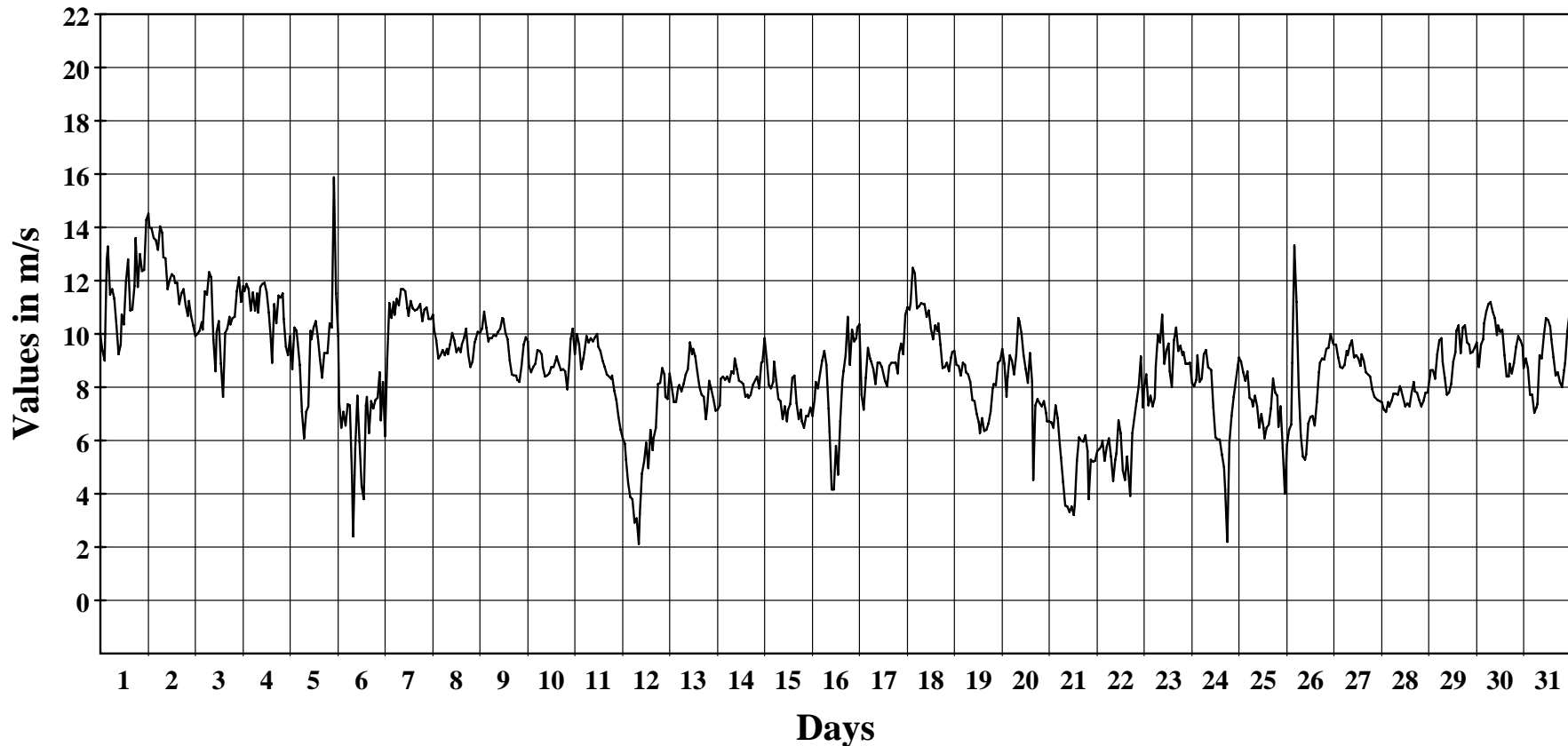
January 2013

Hourly Averages Graph (Windspeed)

SITE 8208

Jaluit

Average Hourly Values



Average Value: 8.7

Site Information:

Project: Wind Monitoring
Location: Jaluit High School
Elevation: 4

Sensor on channel 1:

NRG #40 Anem. m/s
Height: 3464 m
Serial #: SN:9858

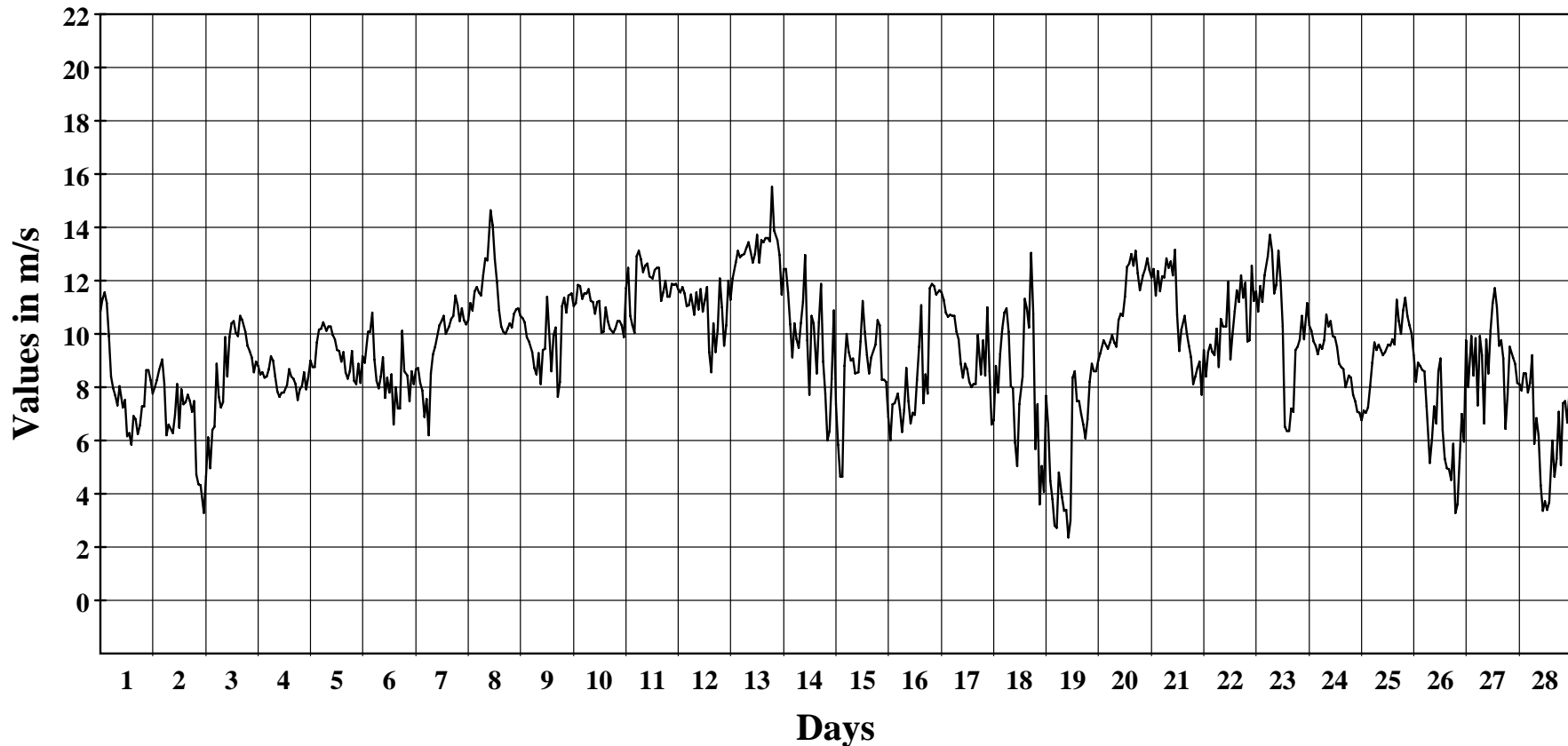
February 2013

Hourly Averages Graph (Windspeed)

SITE 8208

Jaluit

Average Hourly Values



Average Value: 9.3

Site Information:

Project: Wind Monitoring
Location: Jaluit High School
Elevation: 4

Sensor on channel 1:

NRG #40 Anem. m/s
Height: 3464 m
Serial #: SN:9858

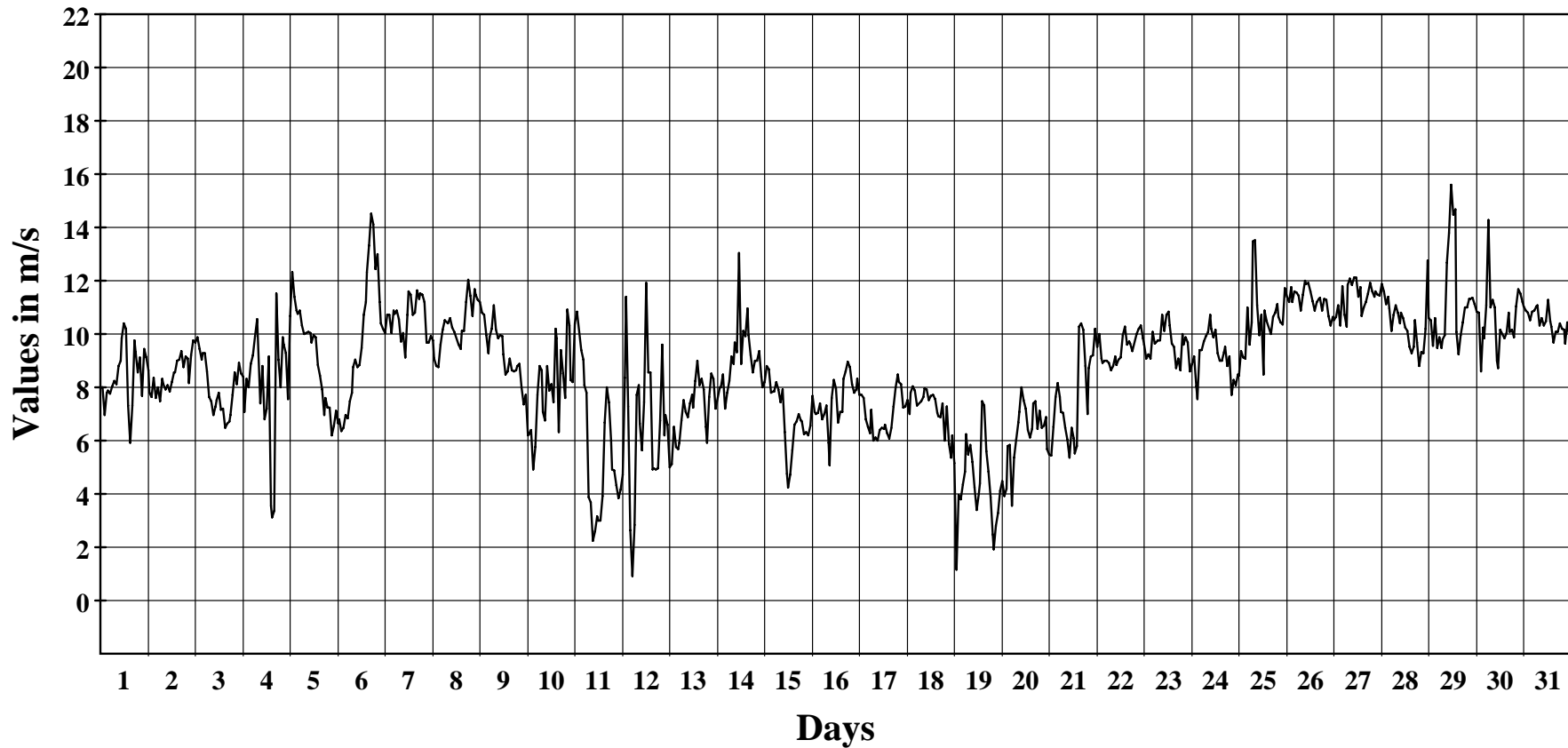
March 2013

Hourly Averages Graph (Windspeed)

SITE 8208

Jaluit

Average Hourly Values



Average Value: 8.7

Site Information:

Project: Wind Monitoring
Location: Jaluit High School
Elevation: 4

Sensor on channel 1:

NRG #40 Anem. m/s
Height: 3464 m
Serial #: SN:9858

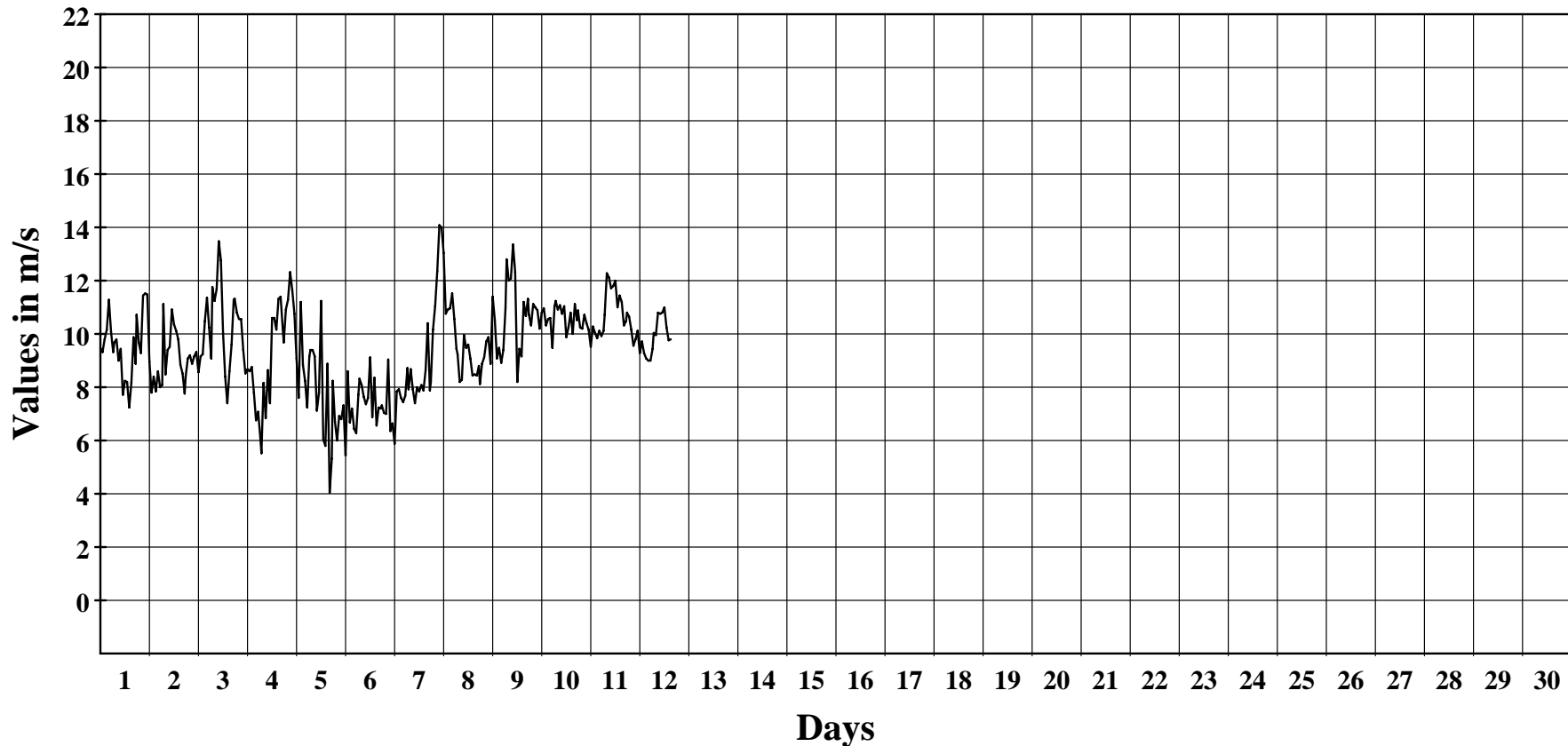
April 2013

Hourly Averages Graph (Windspeed)

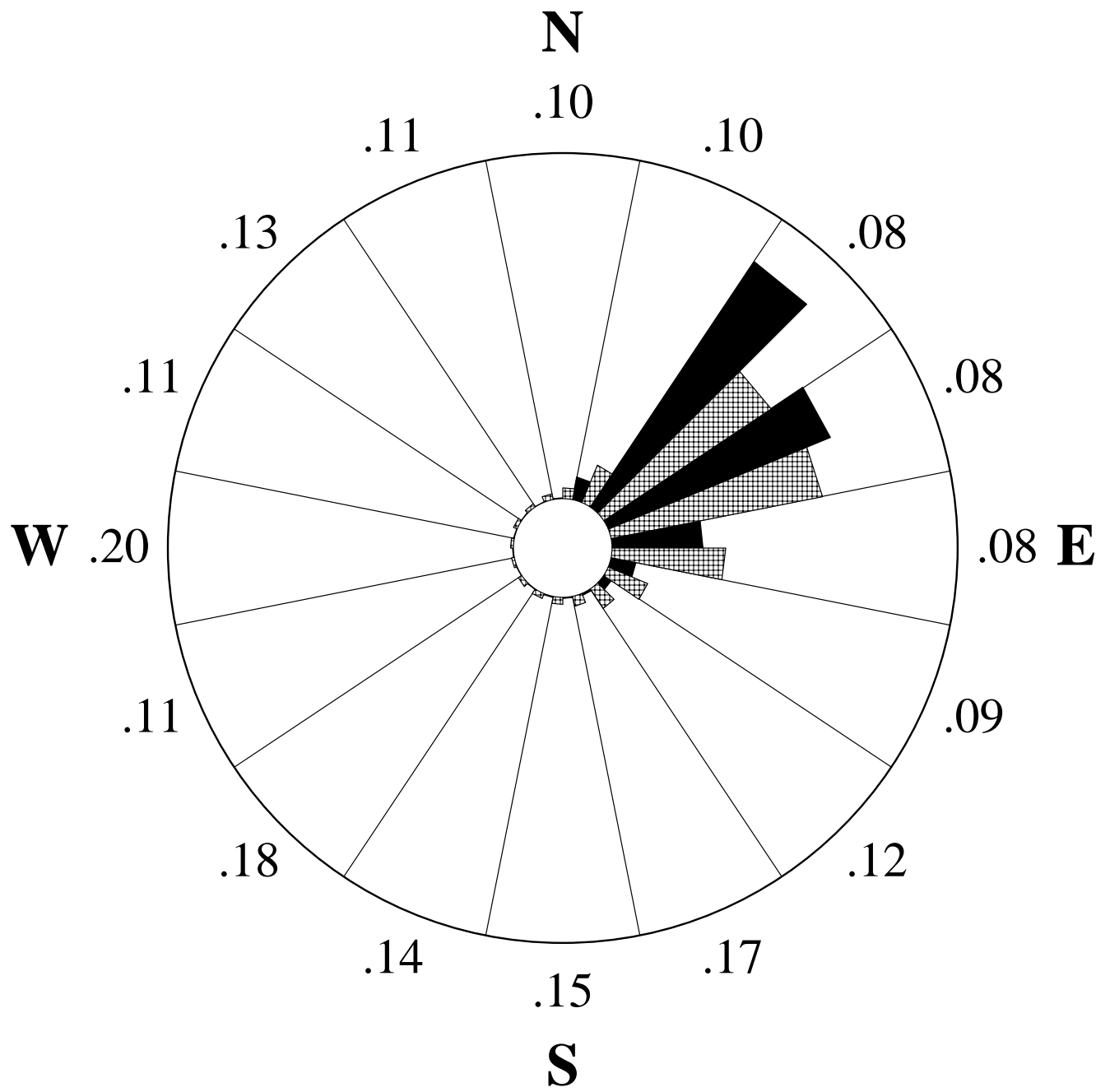
SITE 8208

Jaluit

Average Hourly Values



Average Value: 9.4



6/19/2012 to 4/12/2013

Wind Rose (ENE)

SITE 8208

Jaluit

Site Information:

Project: Wind Monitoring
 Location: Jaluit High School
 Elevation: 4

Anemometer on channel 1:

NRG #40 Anem. m/s
 Height: 3464 m
 Serial #: SN:9858

Vane on channel 7:

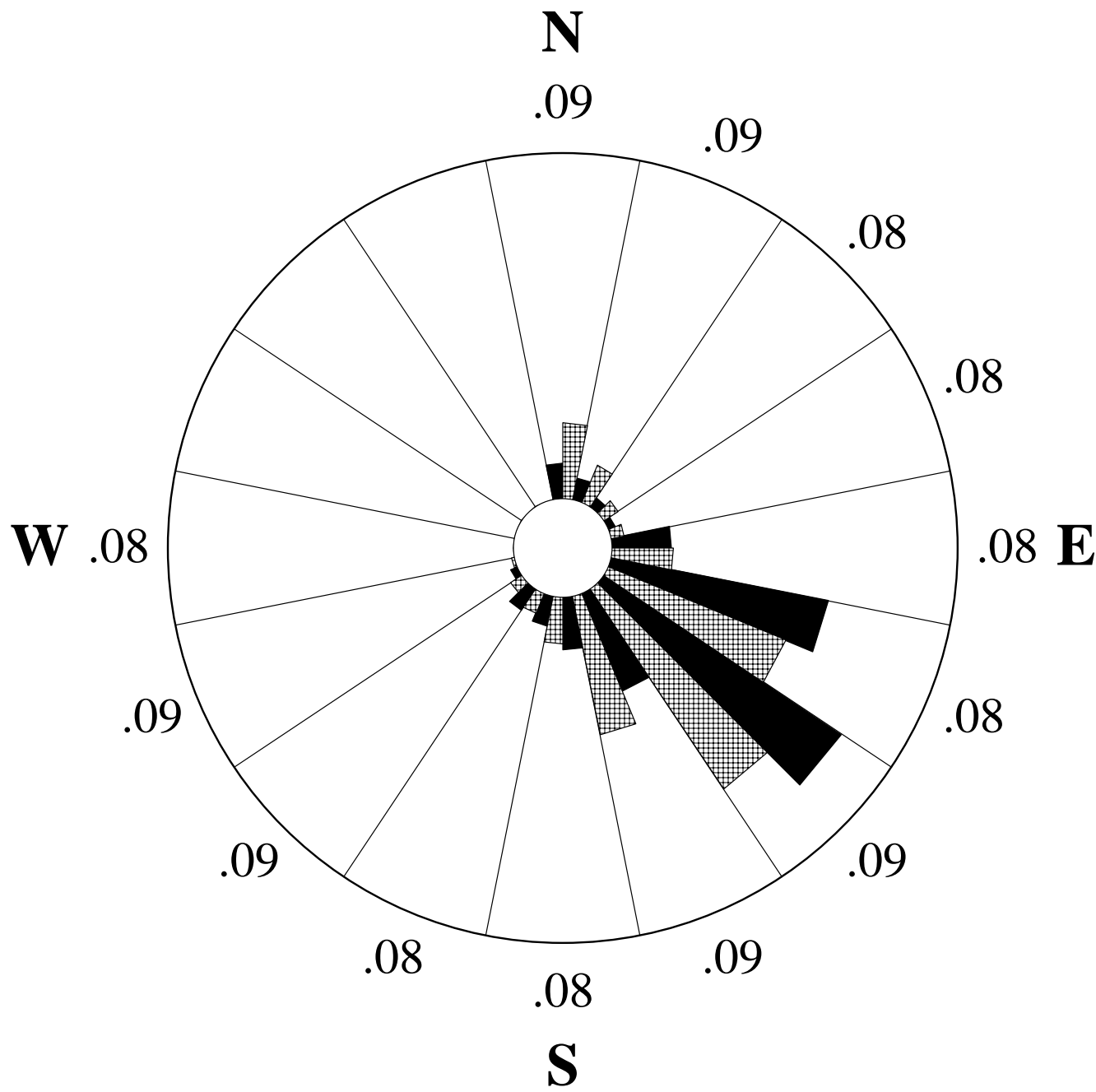
#200P Wind Vane
 Height: 3200 m
 Serial #: SN:

Outer Numbers are Average TIs for speeds greater than 4.5 m/s

Inner Circle = 0%

Outer Circle = 50%

- Percent of Total Wind Energy
- Percent of Total Time



6/19/2012 to 4/12/2013

Wind Rose (SE)

SITE 8208

Jaluit

Site Information:

Project: Wind Monitoring

Location: Jaluit High School

Elevation: 4

Anemometer on channel 1:

NRG #40 Anem. m/s

Height: 3464 m

Serial #: SN:9858

Vane on channel 8:

#200P Wind Vane

Height: 0

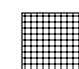
Serial #: SN:

Outer Numbers are Average TIs for speeds greater than 4.5 m/s

Inner Circle = 0%

Outer Circle = 40%

 Percent of Total Wind Energy

 Percent of Total Time

Site Information:

Project: Wind Monitoring
Location: Jaluit High School
Elevation: 4

Sensor on channel 9:

NRG #110S Temp C
Height: 3 m
Serial #: SN:

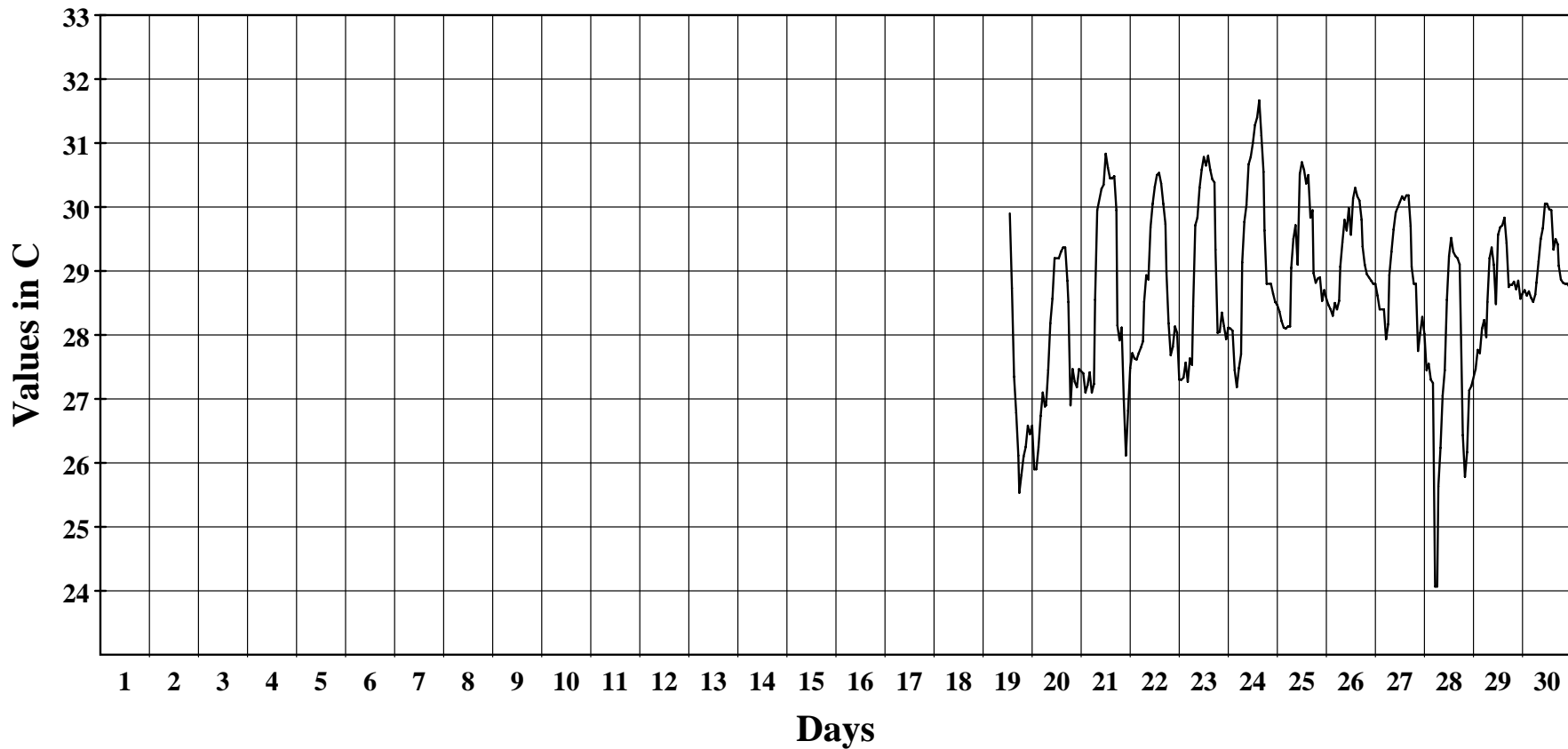
June 2012

Hourly Averages Graph (Temperature)

SITE 8208

Jaluit

Average Hourly Values



Average Value: 28.7

Site Information:

Project: Wind Monitoring
Location: Jaluit High School
Elevation: 4

Sensor on channel 9:

NRG #110S Temp C
Height: 3 m
Serial #: SN:

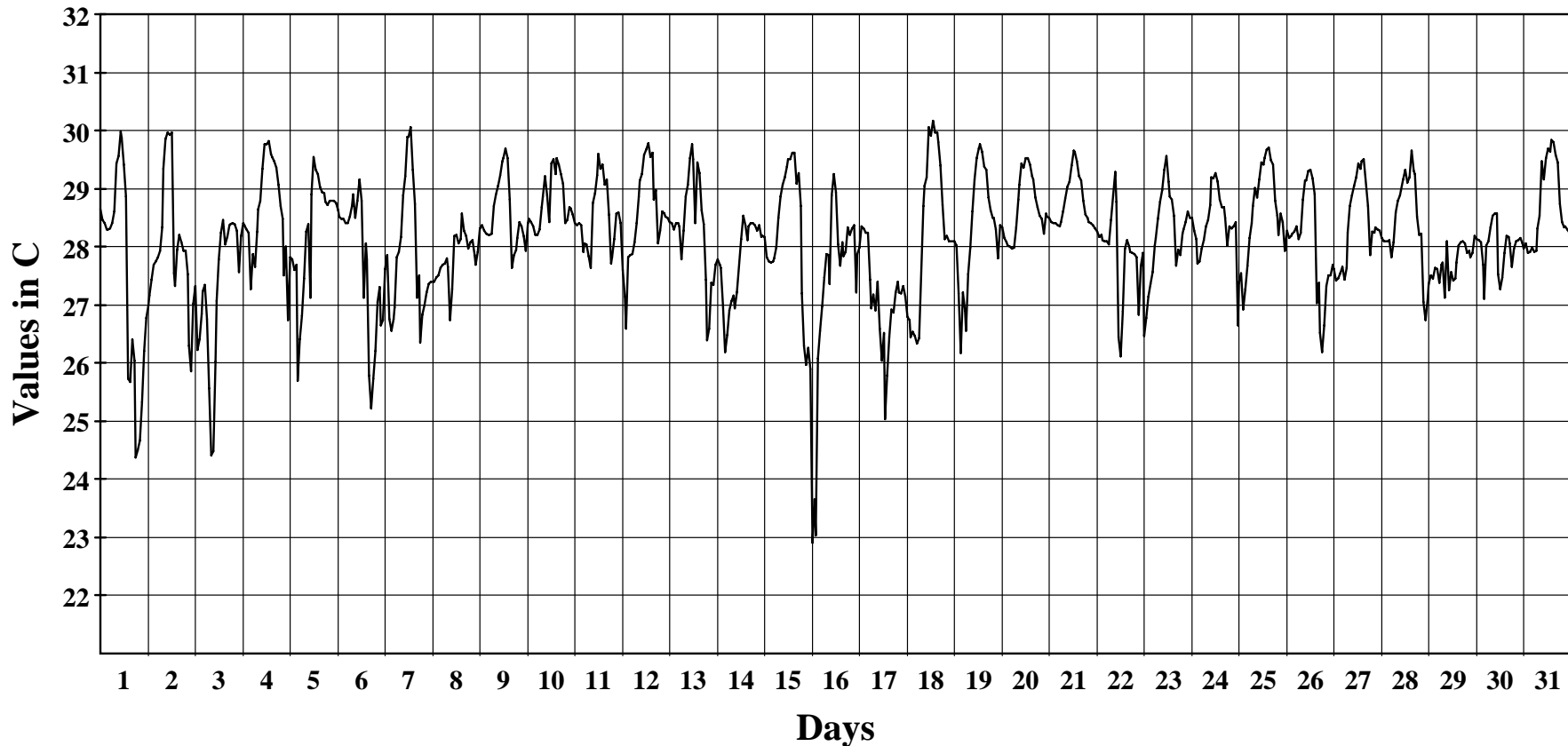
July 2012

Hourly Averages Graph (Temperature)

SITE 8208

Jaluit

Average Hourly Values



Average Value: 28.1

Site Information:

Project: Wind Monitoring
Location: Jaluit High School
Elevation: 4

Sensor on channel 9:

NRG #110S Temp C
Height: 3 m
Serial #: SN:

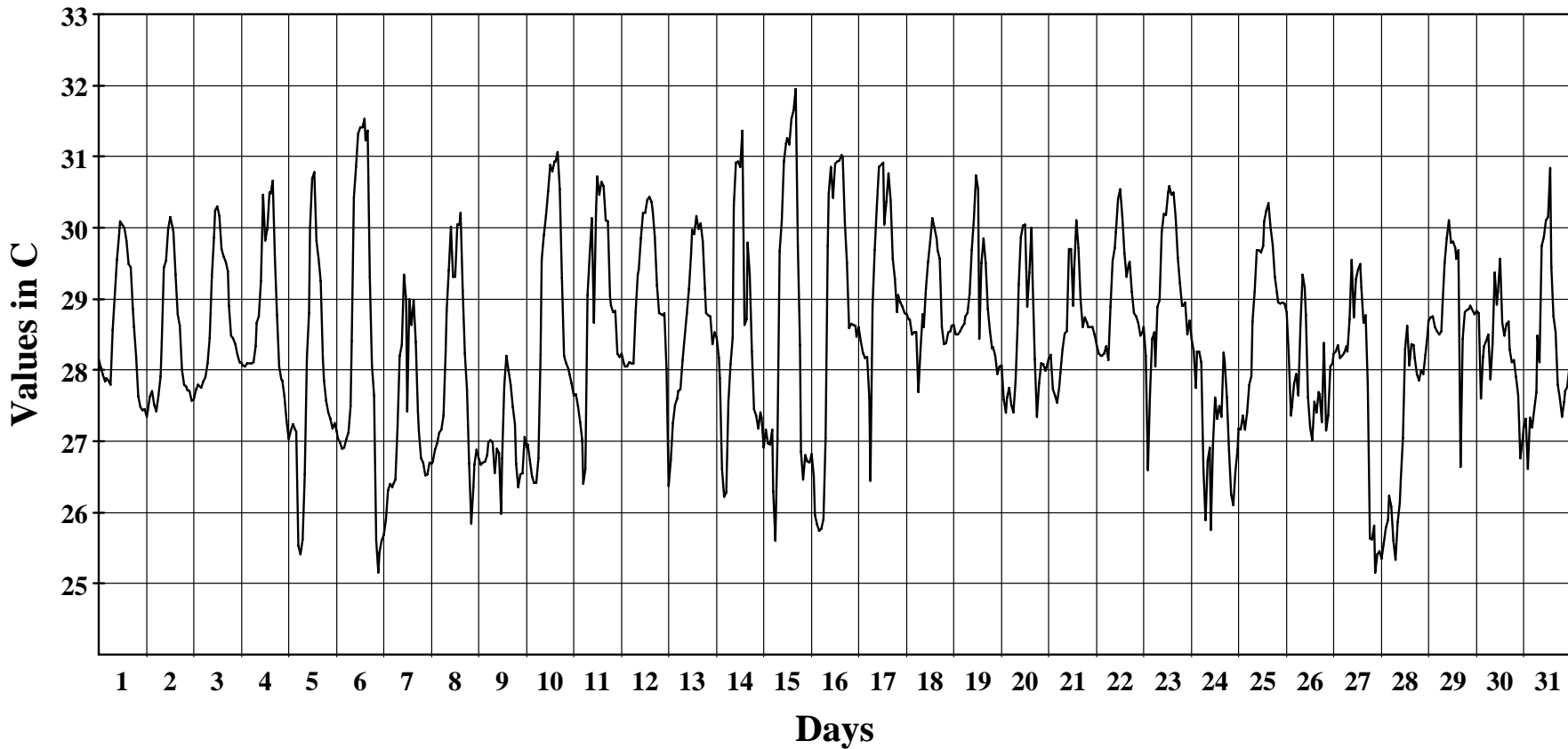
August 2012

Hourly Averages Graph (Temperature)

SITE 8208

Jaluit

Average Hourly Values



Average Value: 28.4

Site Information:

Project: Wind Monitoring
Location: Jaluit High School
Elevation: 4

Sensor on channel 9:

NRG #110S Temp C
Height: 3 m
Serial #: SN:

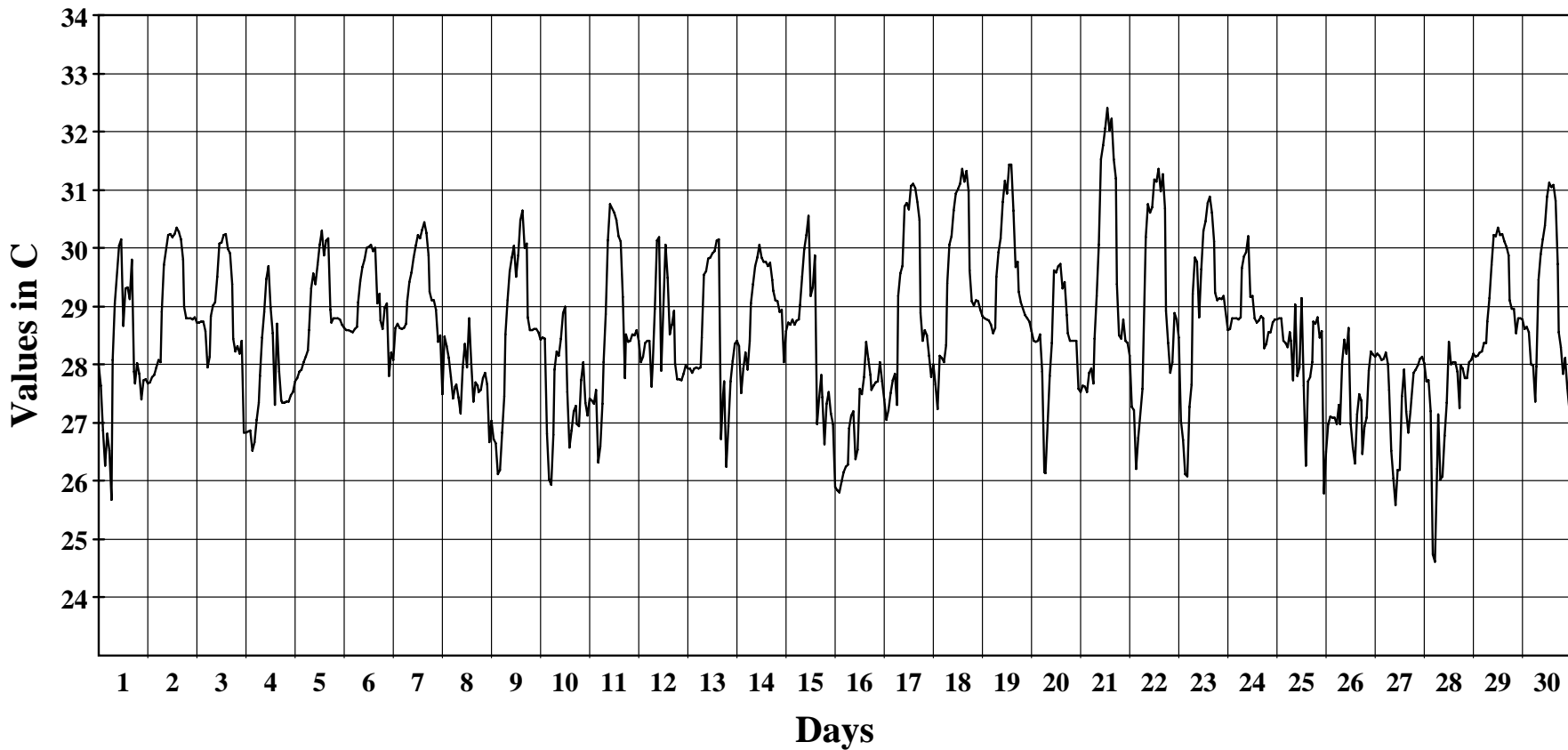
September 2012

Hourly Averages Graph (Temperature)

SITE 8208

Jaluit

Average Hourly Values



Average Value: 28.6

Site Information:

Project: Wind Monitoring
Location: Jaluit High School
Elevation: 4

Sensor on channel 9:

NRG #110S Temp C
Height: 3 m
Serial #: SN:

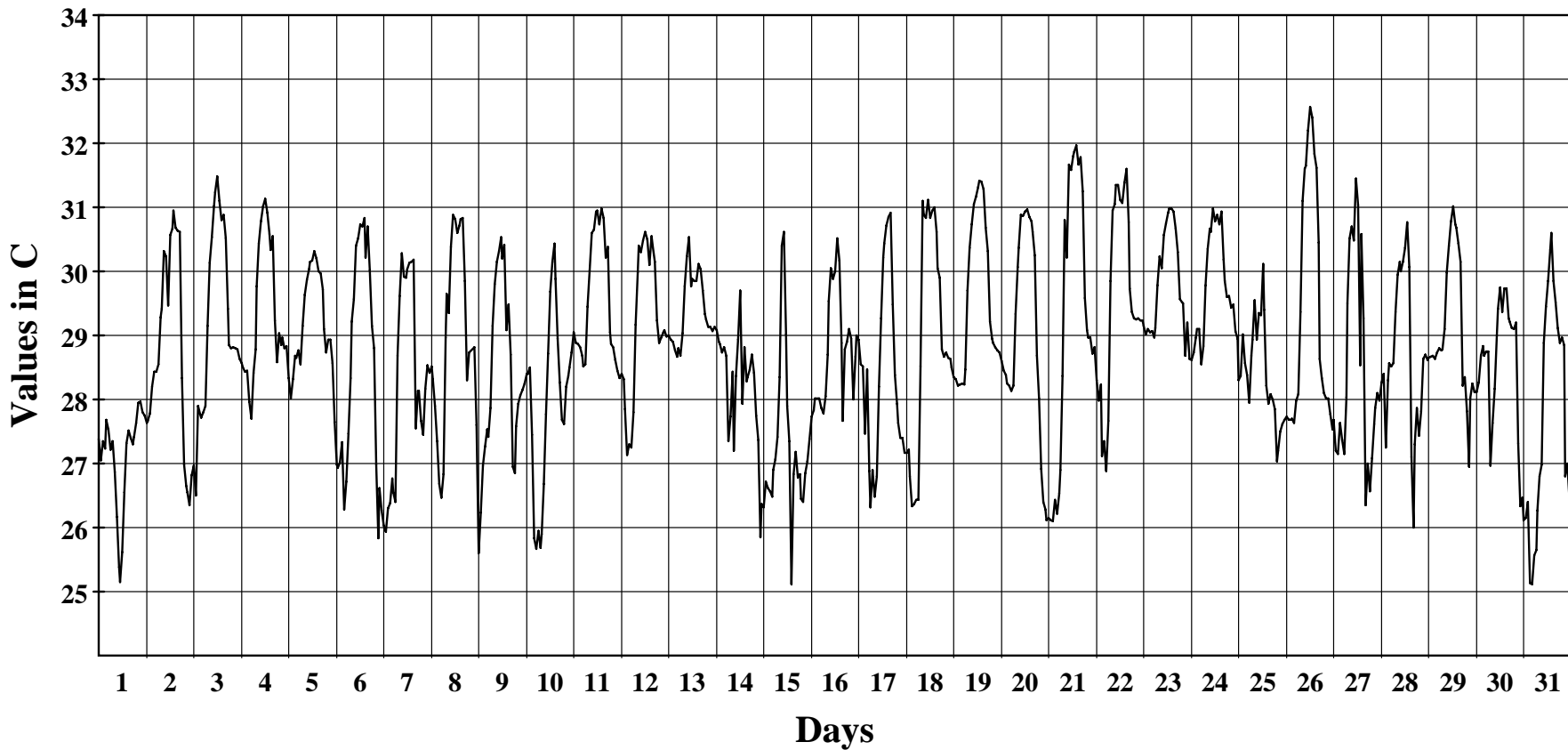
October 2012

Hourly Averages Graph (Temperature)

SITE 8208

Jaluit

Average Hourly Values



Average Value: 28.8

Site Information:

Project: Wind Monitoring
Location: Jaluit High School
Elevation: 4

Sensor on channel 9:

NRG #110S Temp C
Height: 3 m
Serial #: SN:

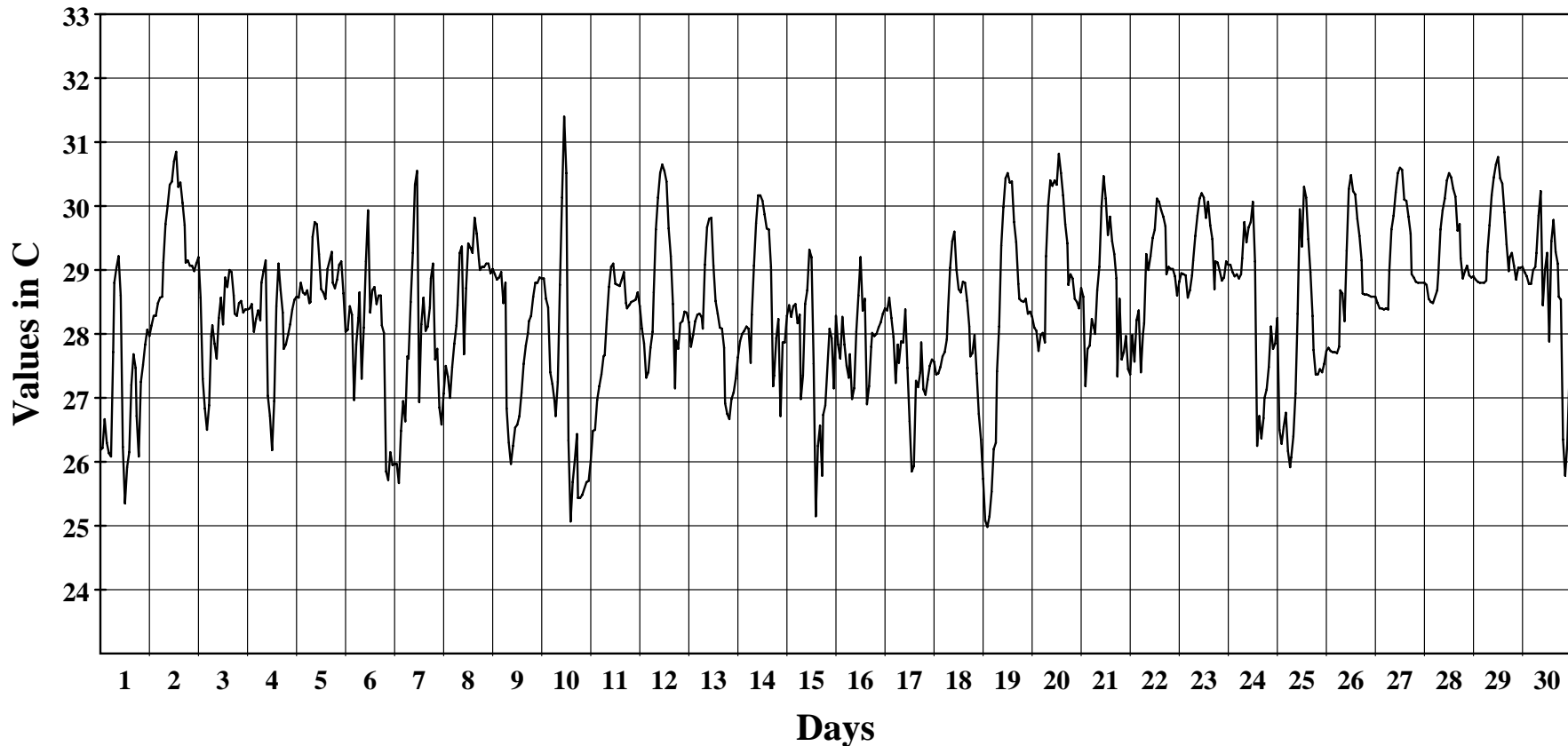
November 2012

Hourly Averages Graph (Temperature)

SITE 8208

Jaluit

Average Hourly Values



Average Value: 28.4

Site Information:

Project: Wind Monitoring
Location: Jaluit High School
Elevation: 4

Sensor on channel 9:

NRG #110S Temp C
Height: 3 m
Serial #: SN:

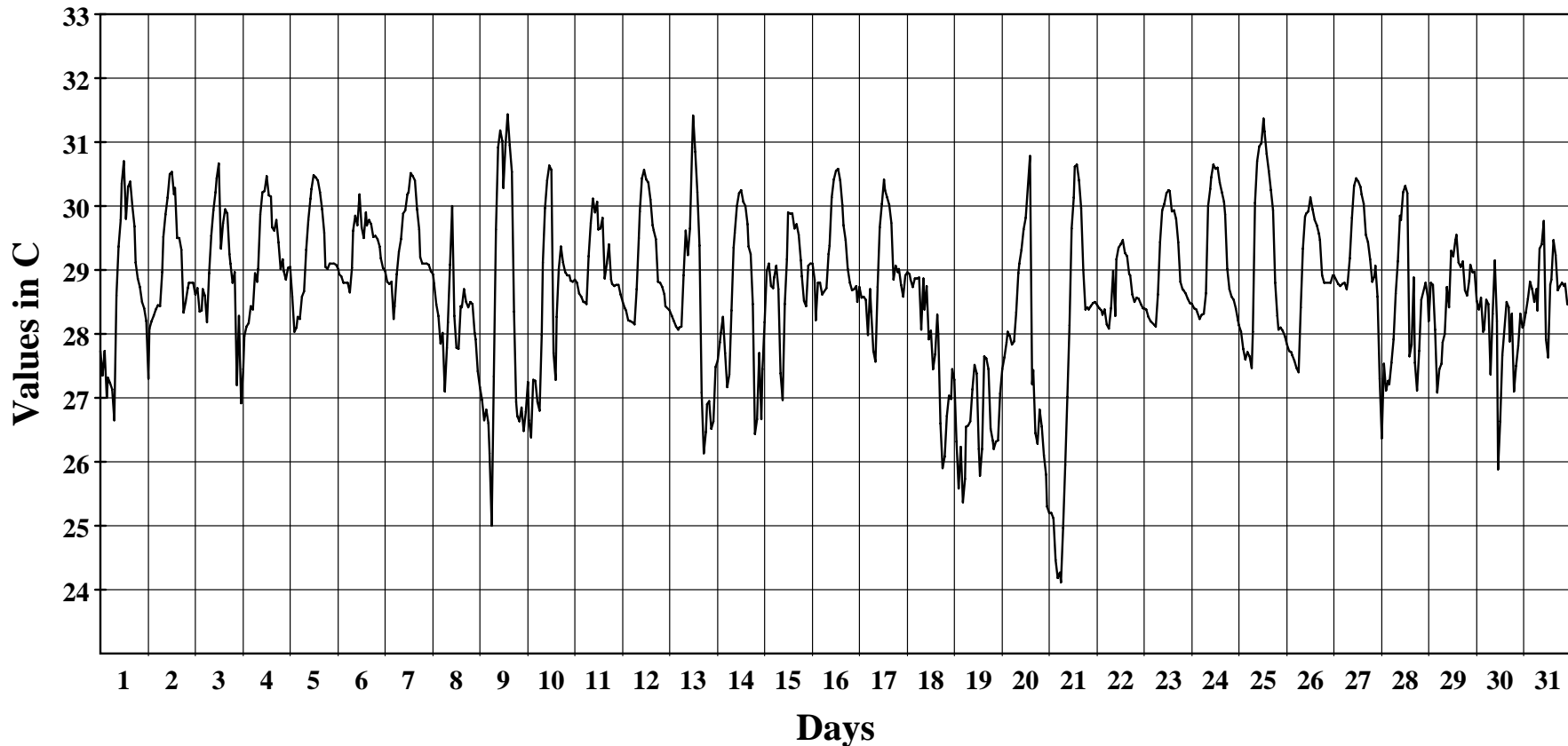
December 2012

Hourly Averages Graph (Temperature)

SITE 8208

Jaluit

Average Hourly Values



Average Value: 28.7

Site Information:

Project: Wind Monitoring
Location: Jaluit High School
Elevation: 4

Sensor on channel 9:

NRG #110S Temp C
Height: 3 m
Serial #: SN:

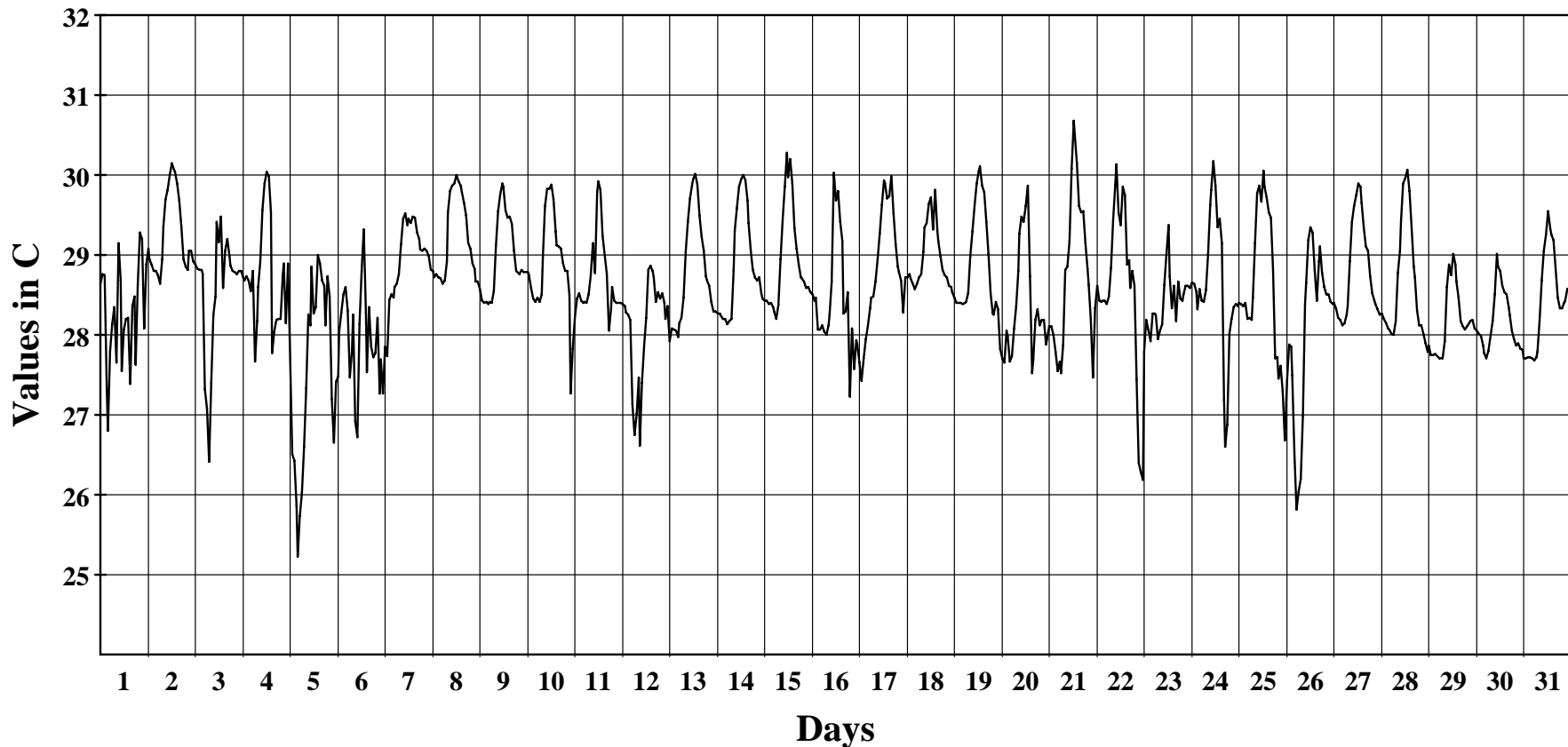
January 2013

Hourly Averages Graph (Temperature)

SITE 8208

Jaluit

Average Hourly Values



Average Value: 28.6

Site Information:

Project: Wind Monitoring
Location: Jaluit High School
Elevation: 4

Sensor on channel 9:

NRG #110S Temp C
Height: 3 m
Serial #: SN:

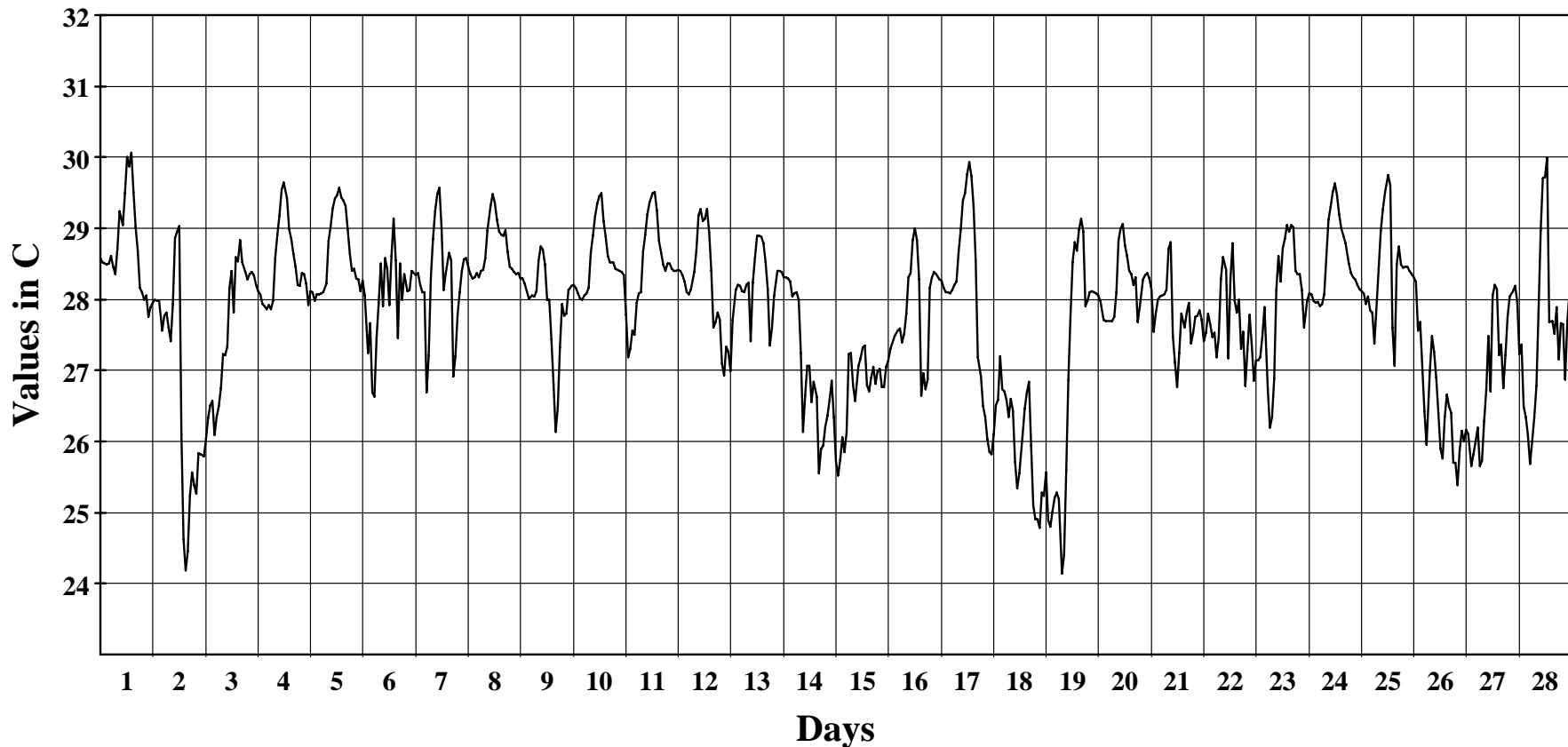
February 2013

Hourly Averages Graph (Temperature)

SITE 8208

Jaluit

Average Hourly Values



Average Value: 27.8

Site Information:

Project: Wind Monitoring
Location: Jaluit High School
Elevation: 4

Sensor on channel 9:

NRG #110S Temp C
Height: 3 m
Serial #: SN:

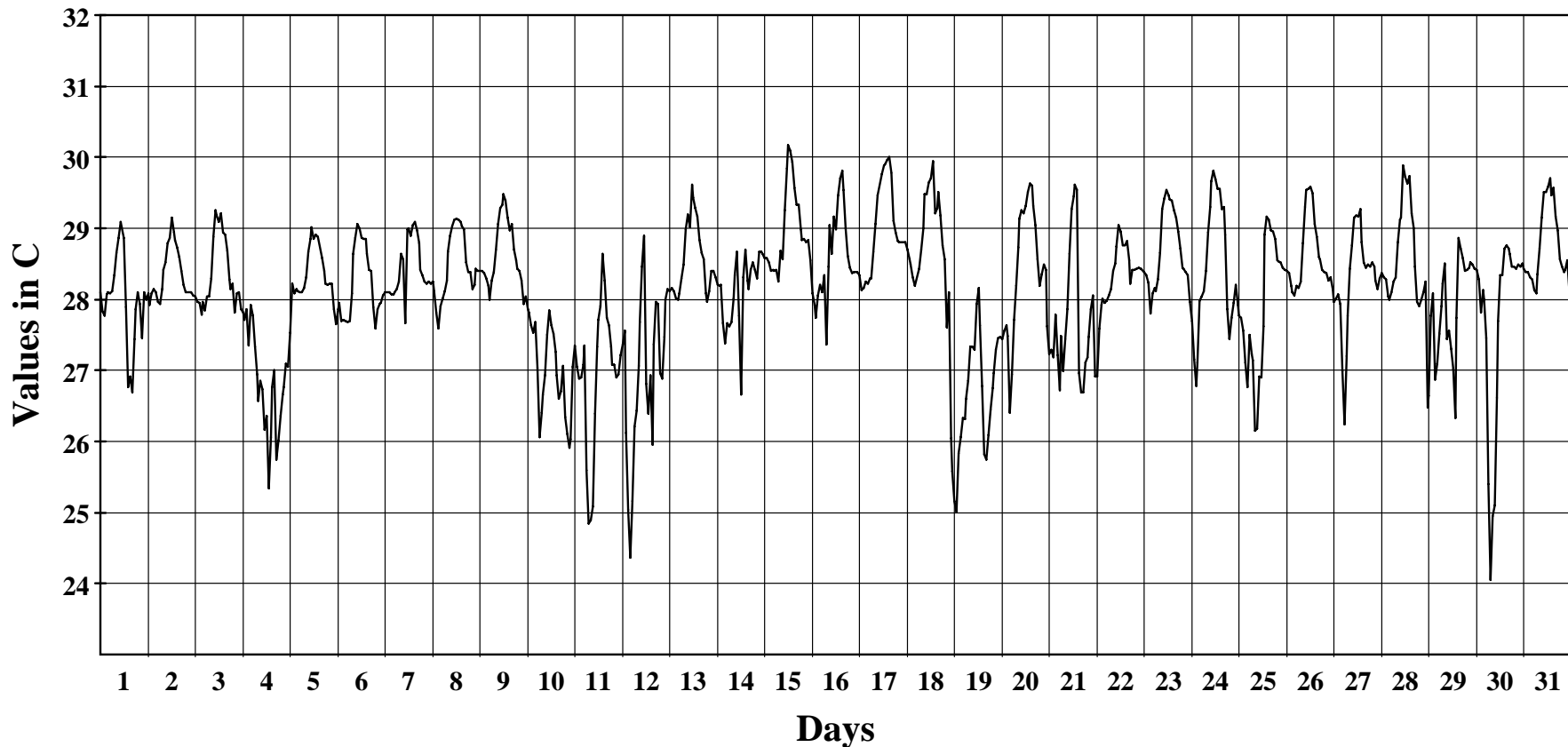
March 2013

Hourly Averages Graph (Temperature)

SITE 8208

Jaluit

Average Hourly Values



Average Value: 28.1

Site Information:

Project: Wind Monitoring
Location: Jaluit High School
Elevation: 4

Sensor on channel 9:

NRG #110S Temp C
Height: 3 m
Serial #: SN:

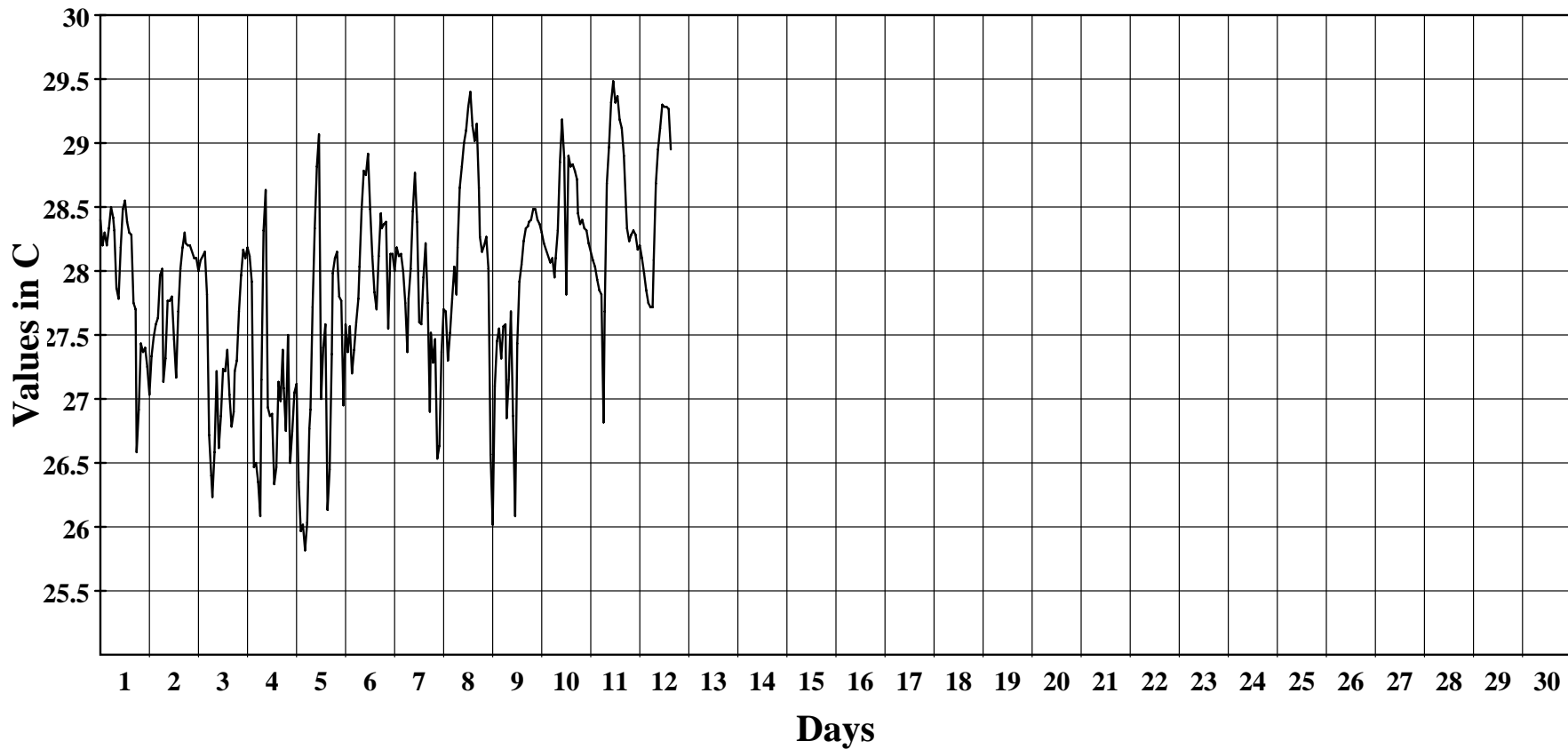
April 2013

Hourly Averages Graph (Temperature)

SITE 8208

Jaluit

Average Hourly Values



Average Value: 27.9

Site Information:

Project: Wind Monitoring
Location: Jaluit High School
Elevation: 4

Sensor on channel 10:

Licor Pyran W/sqm
Height: 3 m
Serial #: SN:

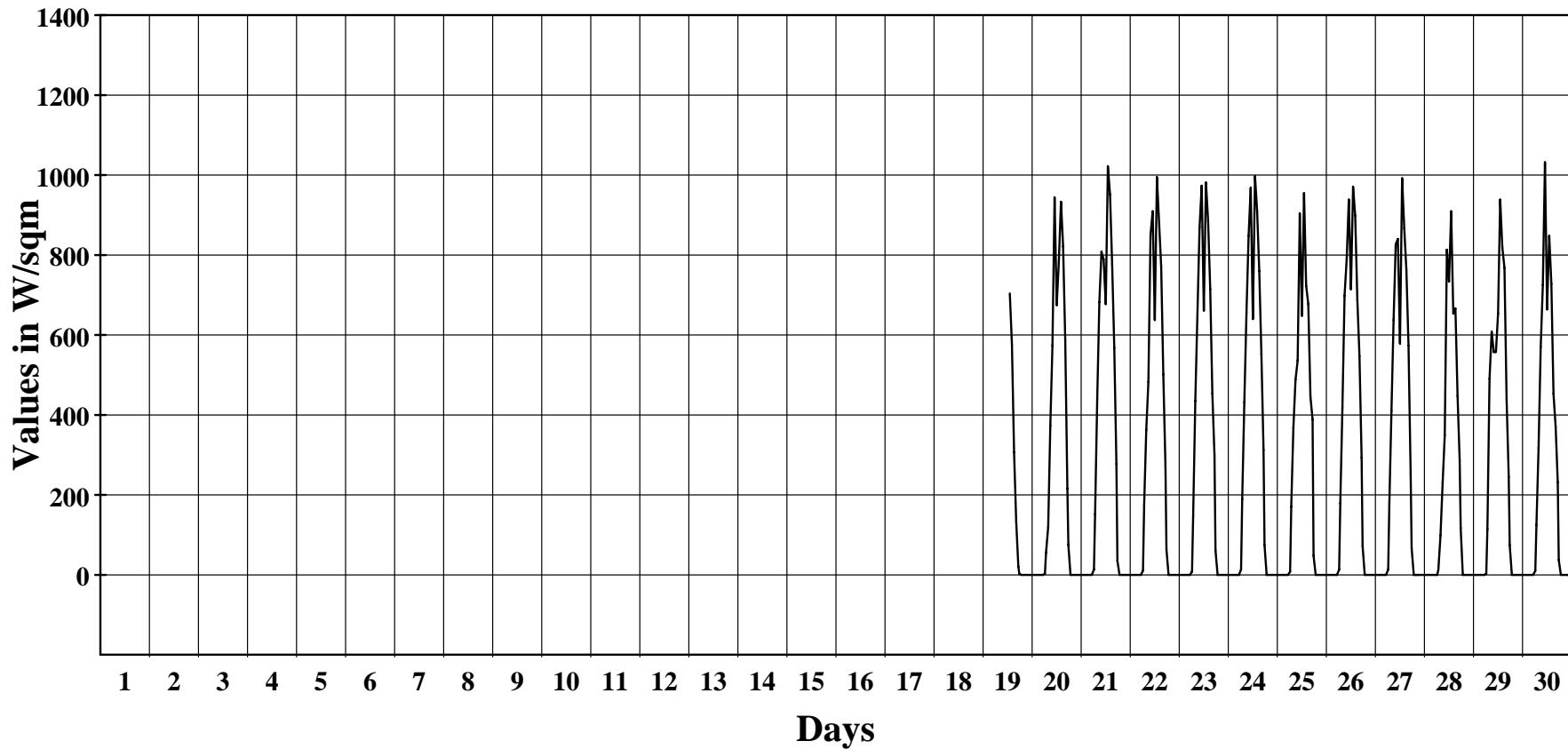
June 2012

Hourly Averages Graph (Irradiation)

SITE 8208

Jaluit

Average Hourly Values



Average Value: 271.9

Site Information:

Project: Wind Monitoring
Location: Jaluit High School
Elevation: 4

Sensor on channel 10:

Licor Pyran W/sqm
Height: 3 m
Serial #: SN:

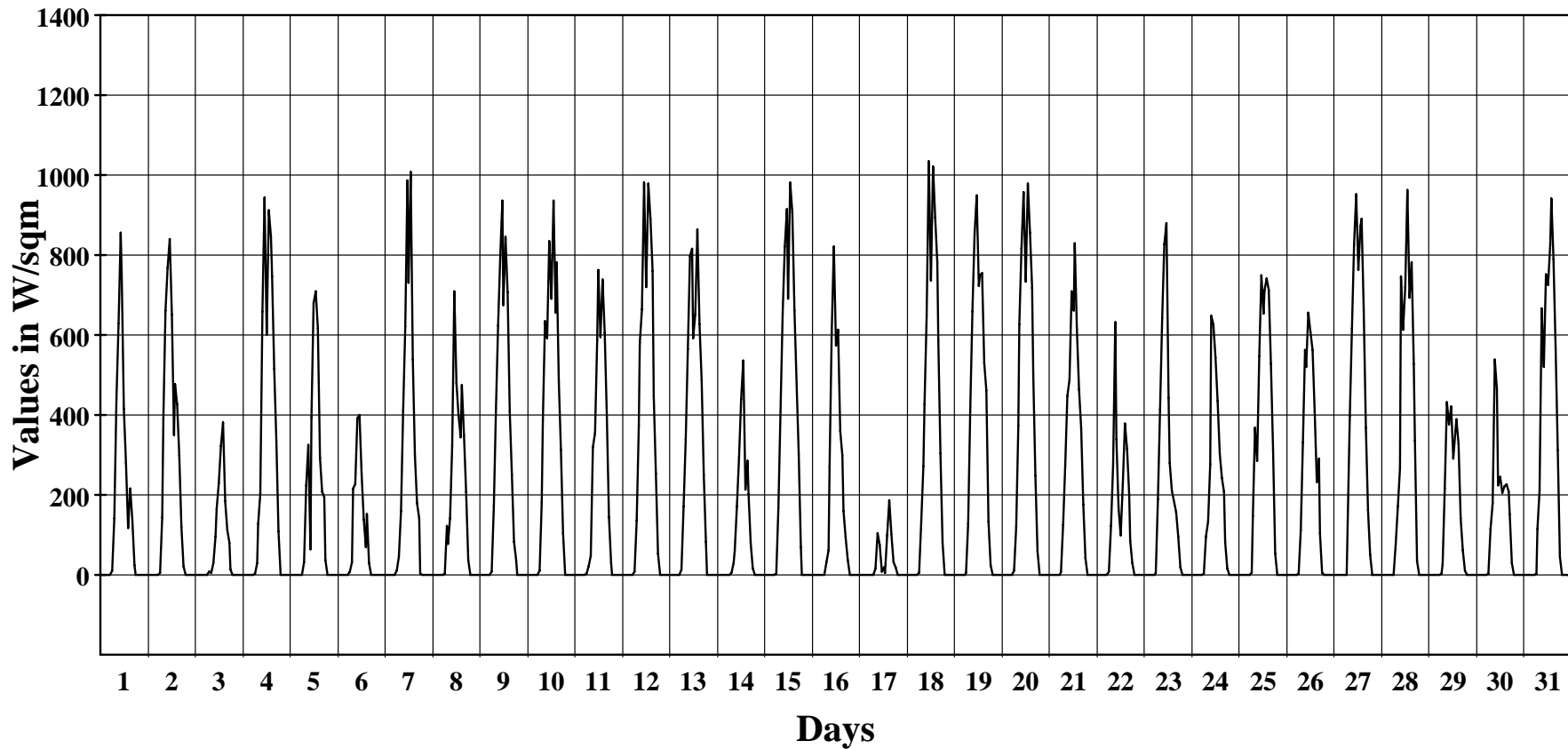
July 2012

Hourly Averages Graph (Irradiation)

SITE 8208

Jaluit

Average Hourly Values



Average Value: 197.7

Site Information:

Project: Wind Monitoring
Location: Jaluit High School
Elevation: 4

Sensor on channel 10:

Licor Pyran W/sqm
Height: 3 m
Serial #: SN:

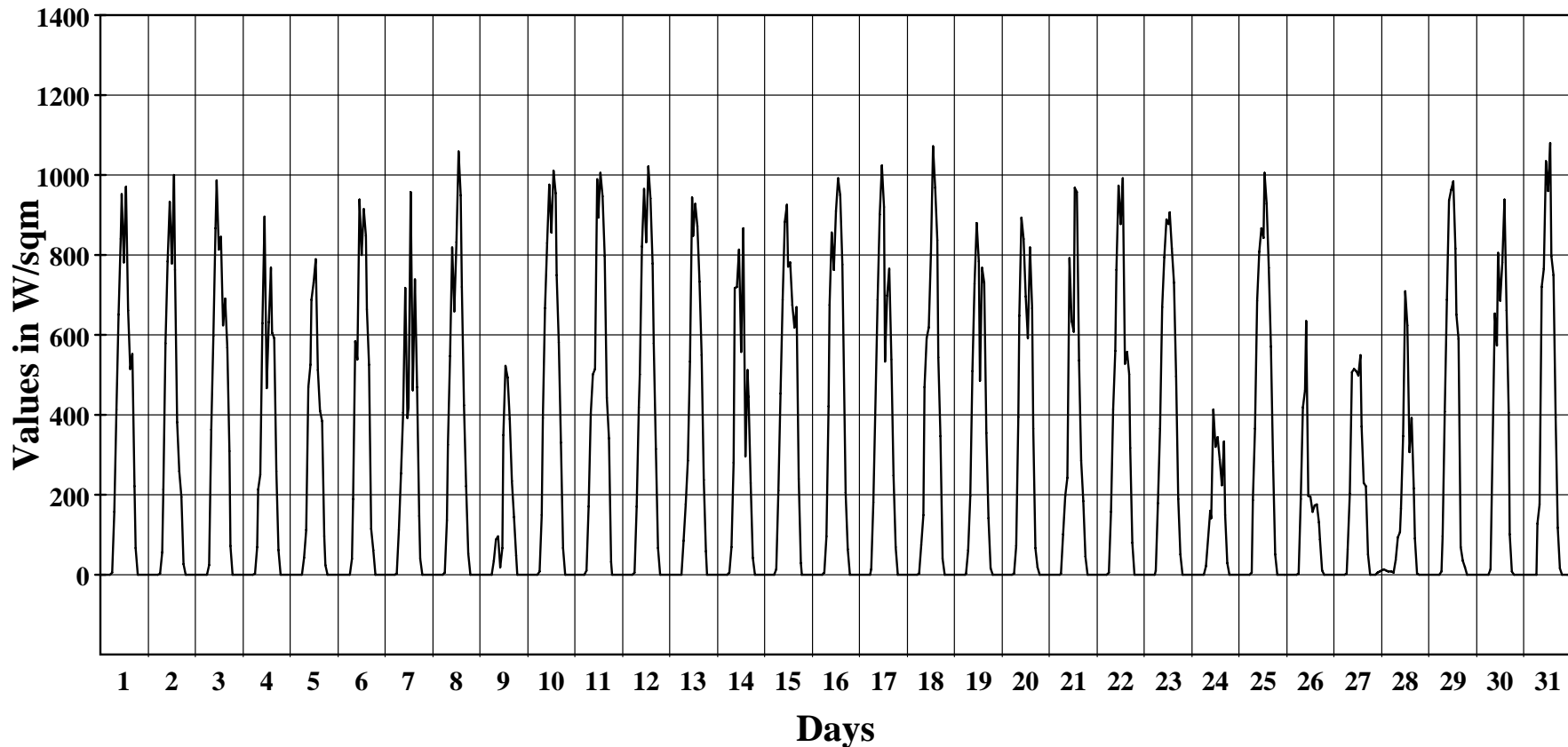
August 2012

Hourly Averages Graph (Irradiation)

SITE 8208

Jaluit

Average Hourly Values



Average Value: 244.2

Site Information:

Project: Wind Monitoring
Location: Jaluit High School
Elevation: 4

Sensor on channel 10:

Licor Pyran W/sqm
Height: 3 m
Serial #: SN:

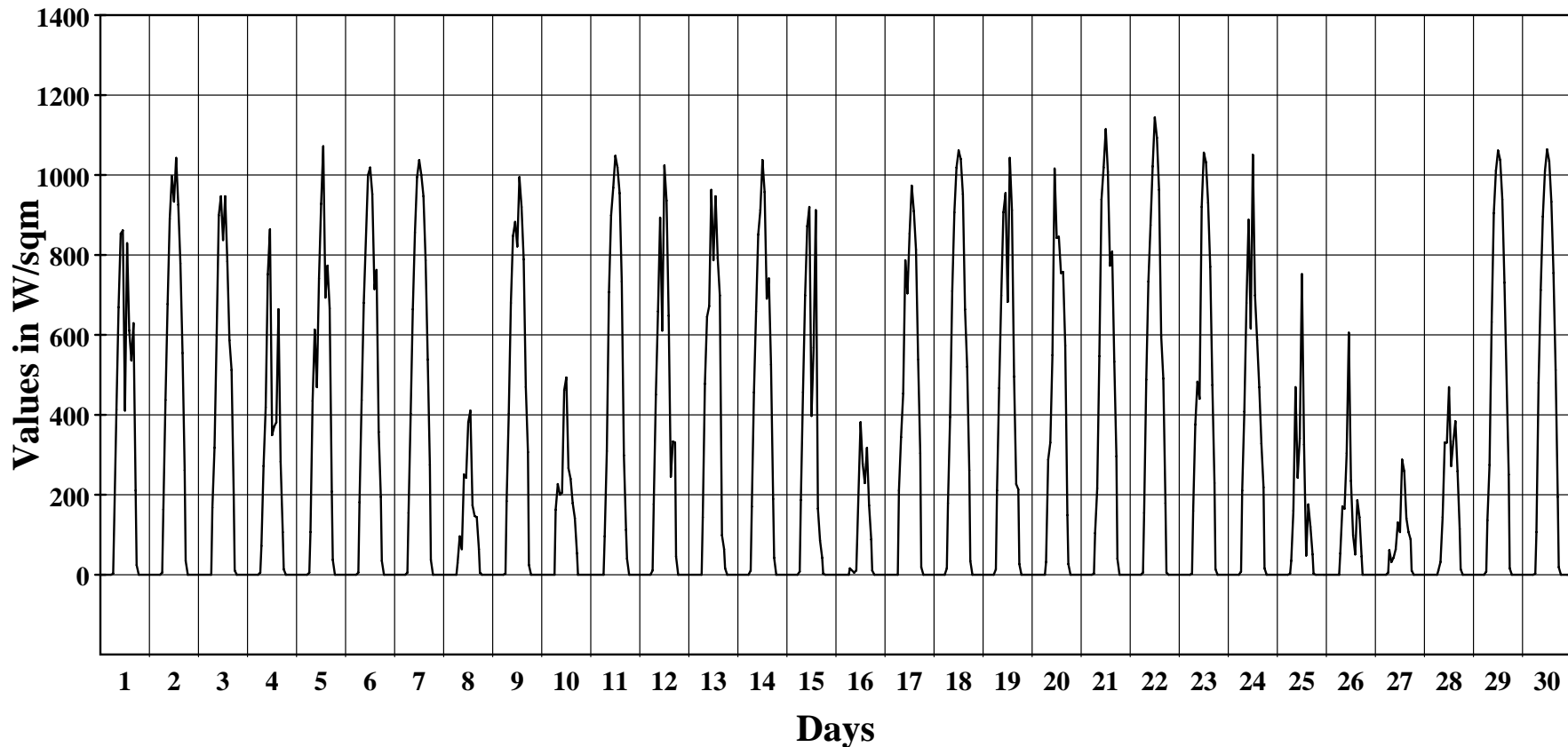
September 2012

Hourly Averages Graph (Irradiation)

SITE 8208

Jaluit

Average Hourly Values



Average Value: 240.1

Site Information:

Project: Wind Monitoring
Location: Jaluit High School
Elevation: 4

Sensor on channel 10:

Licor Pyran W/sqm
Height: 3 m
Serial #: SN:

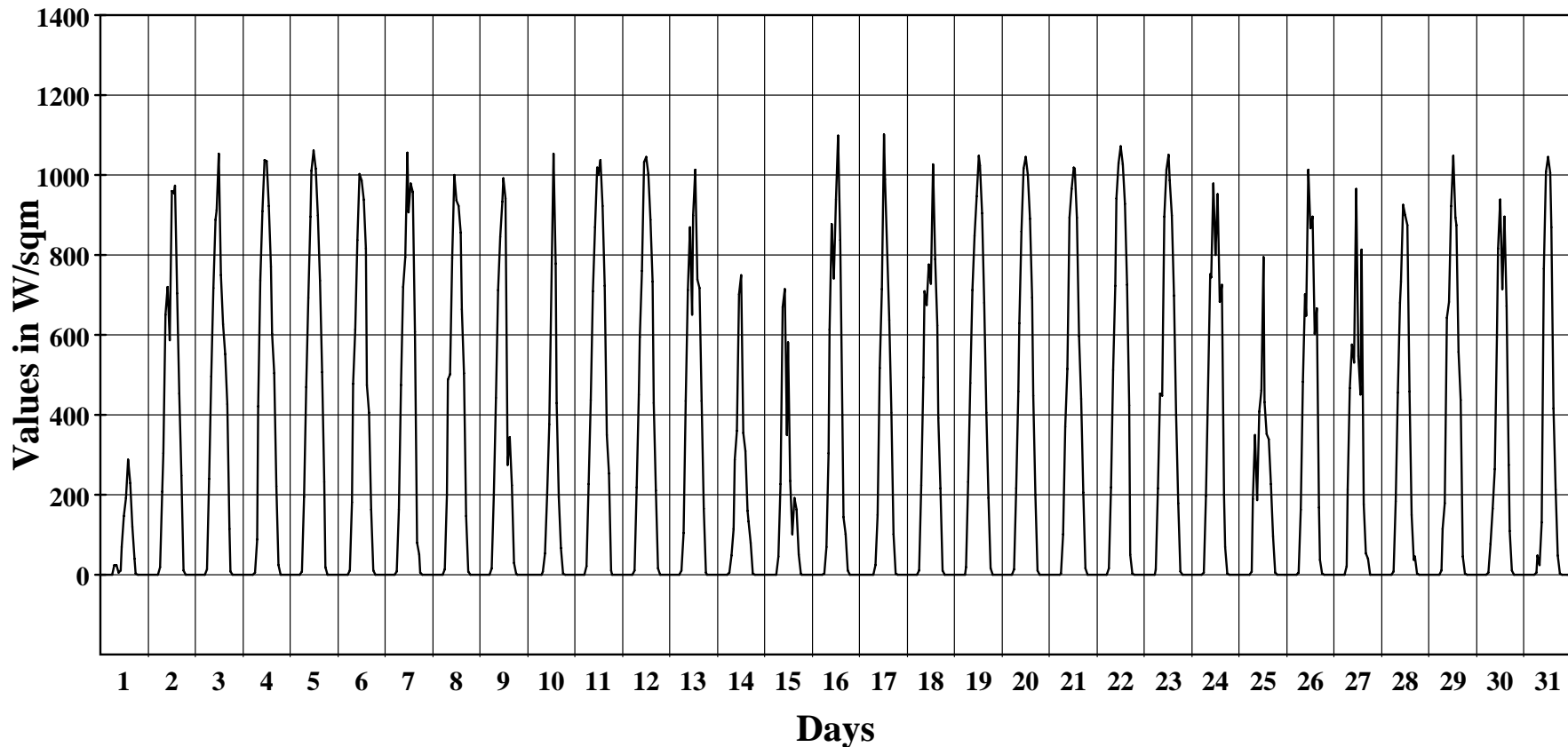
October 2012

Hourly Averages Graph (Irradiation)

SITE 8208

Jaluit

Average Hourly Values



Average Value: 253.3

Site Information:

Project: Wind Monitoring
Location: Jaluit High School
Elevation: 4

Sensor on channel 10:

Licor Pyran W/sqm
Height: 3 m
Serial #: SN:

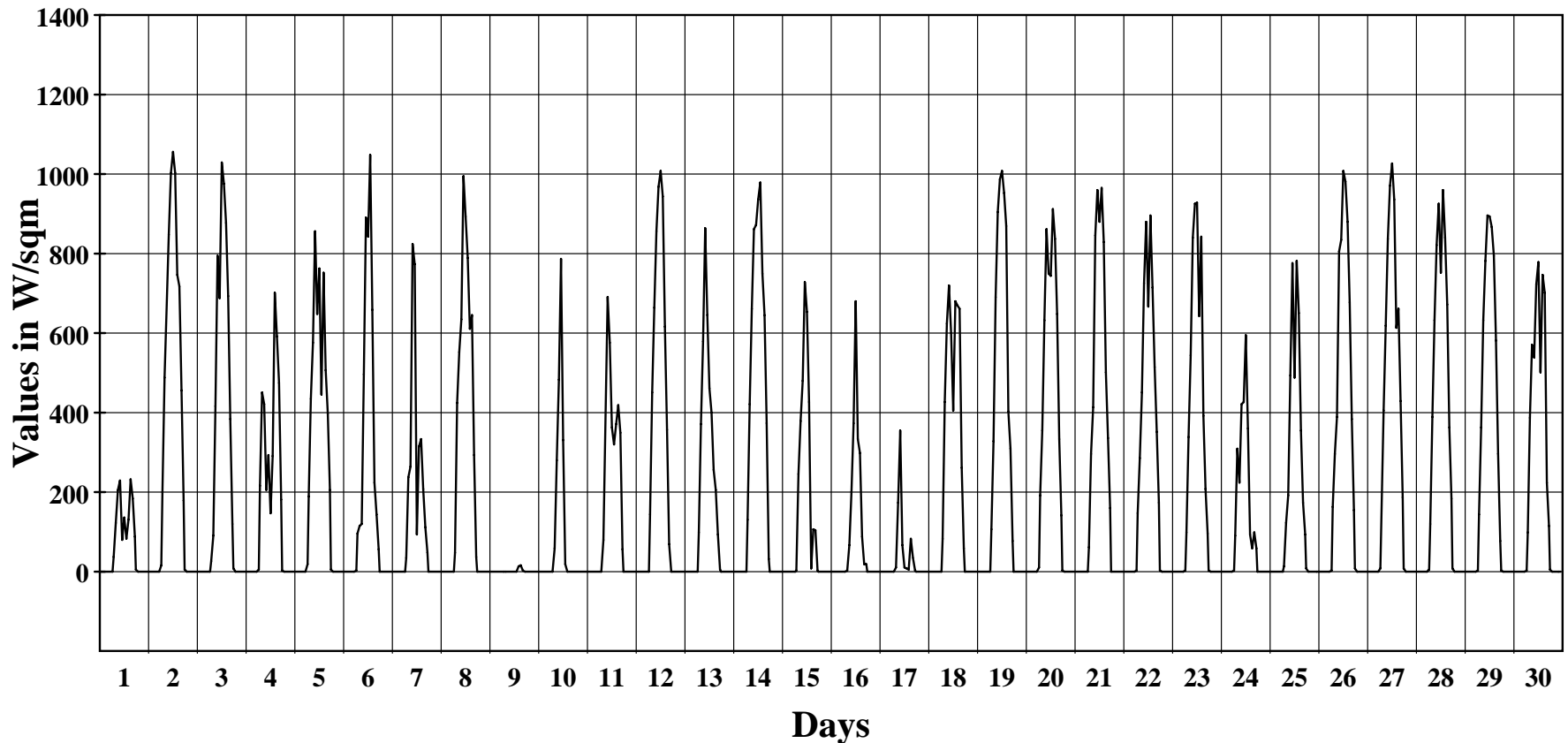
November 2012

Hourly Averages Graph (Irradiation)

SITE 8208

Jaluit

Average Hourly Values



Average Value: 197.0

Site Information:

Project: Wind Monitoring
Location: Jaluit High School
Elevation: 4

Sensor on channel 10:

Licor Pyran W/sqm
Height: 3 m
Serial #: SN:

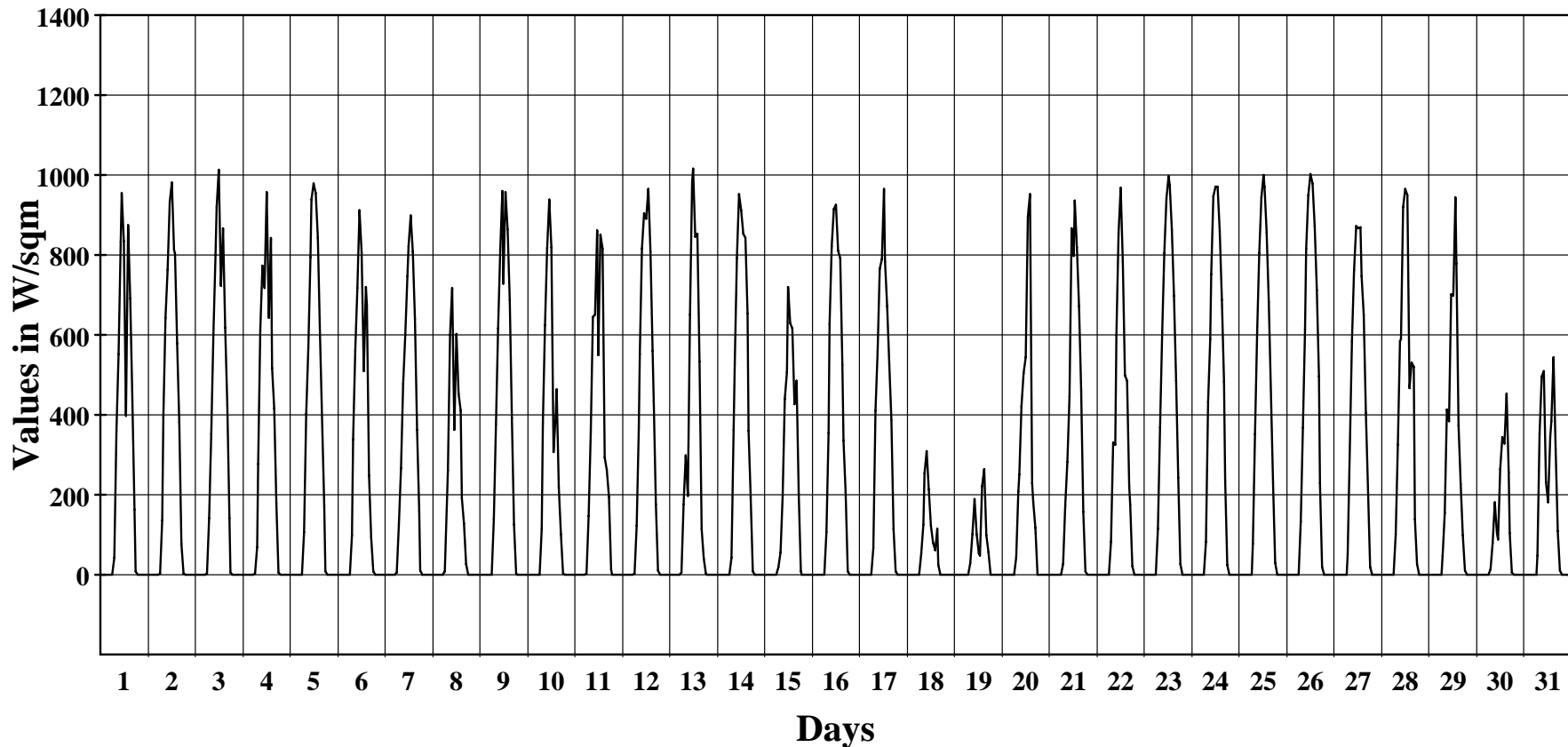
December 2012

Hourly Averages Graph (Irradiation)

SITE 8208

Jaluit

Average Hourly Values



Average Value: 228.4

Site Information:

Project: Wind Monitoring
Location: Jaluit High School
Elevation: 4

Sensor on channel 10:

Licor Pyran W/sqm
Height: 3 m
Serial #: SN:

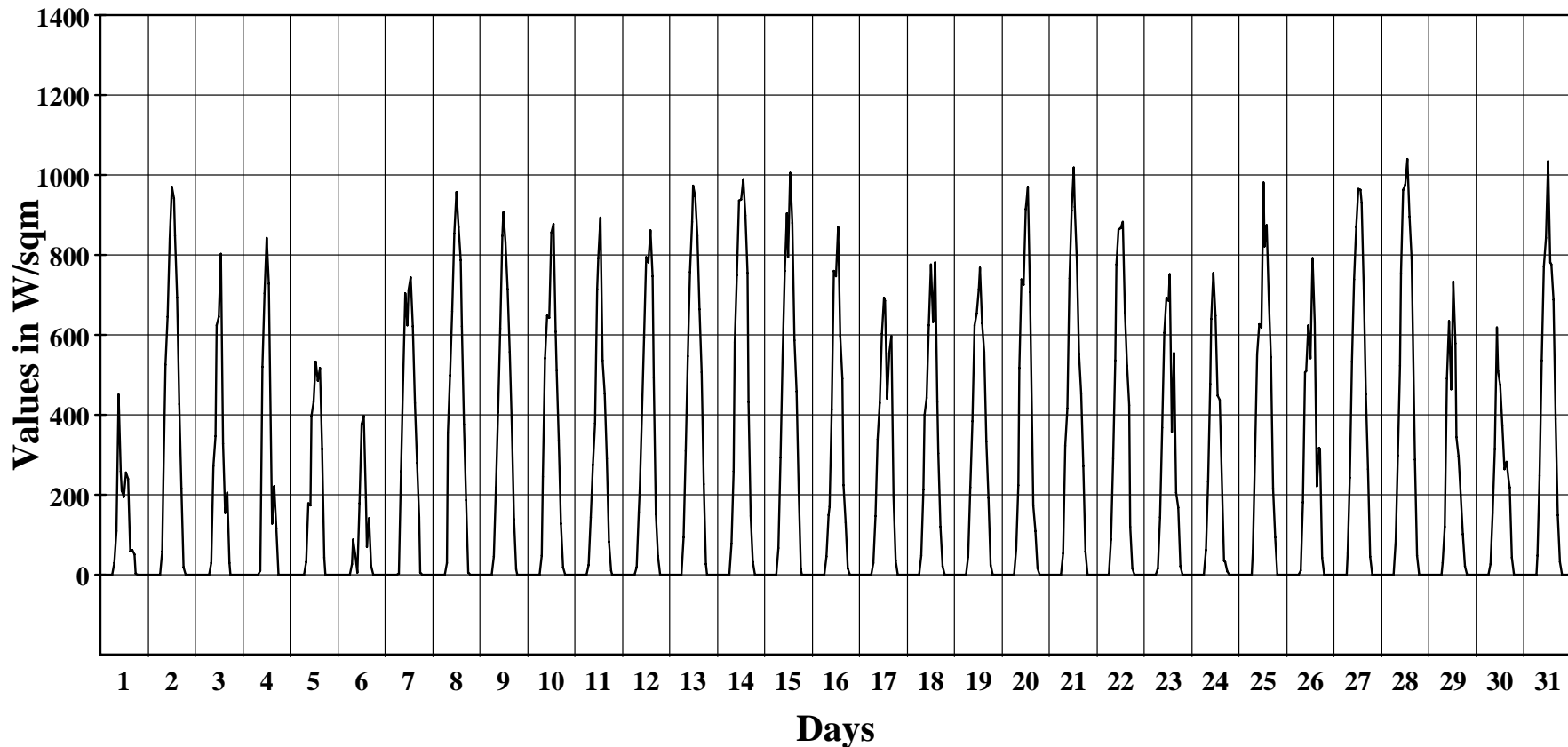
January 2013

Hourly Averages Graph (Irradiation)

SITE 8208

Jaluit

Average Hourly Values



Average Value: 211.1

Site Information:

Project: Wind Monitoring
Location: Jaluit High School
Elevation: 4

Sensor on channel 10:

Licor Pyran W/sqm
Height: 3 m
Serial #: SN:

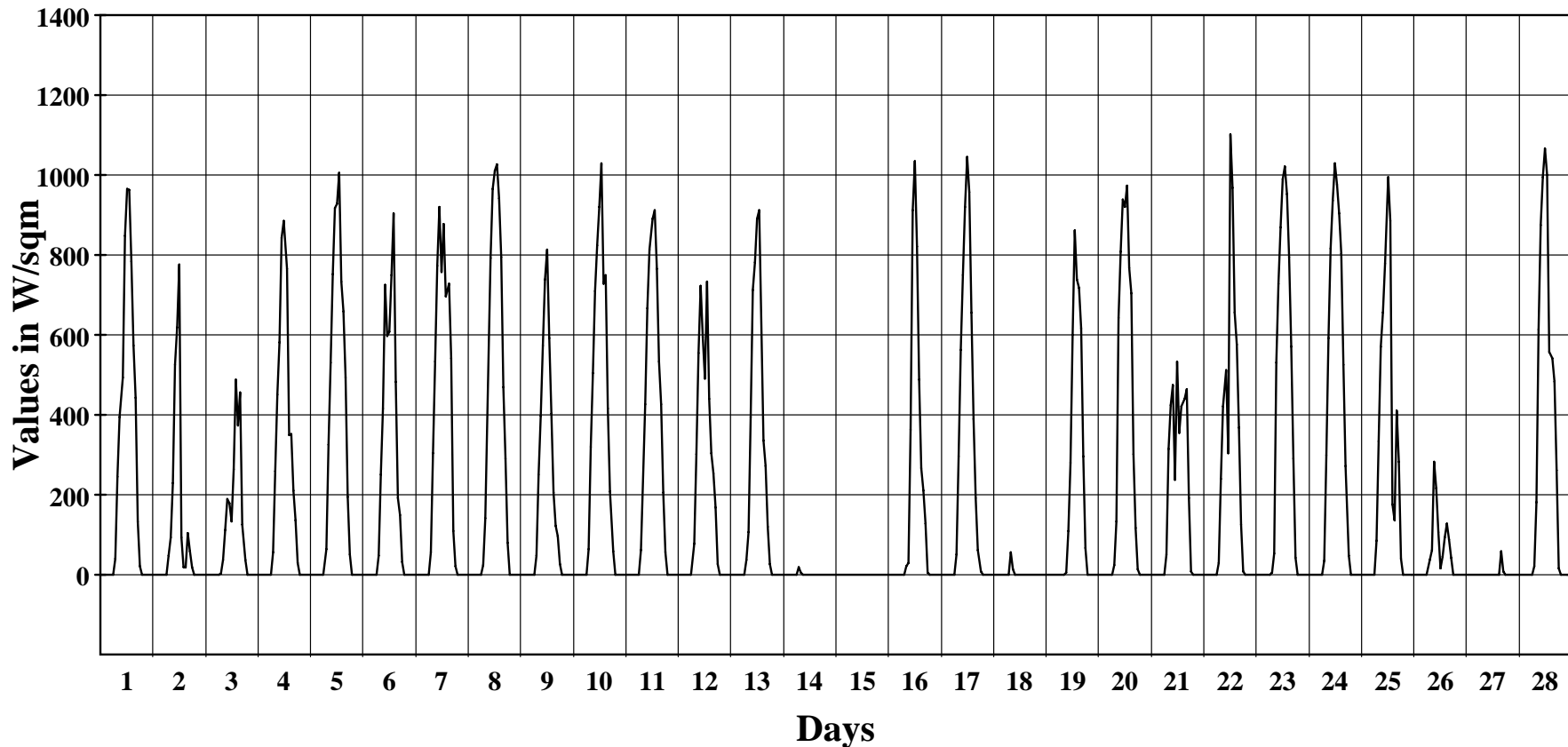
February 2013

Hourly Averages Graph (Irradiation)

SITE 8208

Jaluit

Average Hourly Values



Average Value: 185.9

Site Information:

Project: Wind Monitoring
Location: Jaluit High School
Elevation: 4

Sensor on channel 10:

Licor Pyran W/sqm
Height: 3 m
Serial #: SN:

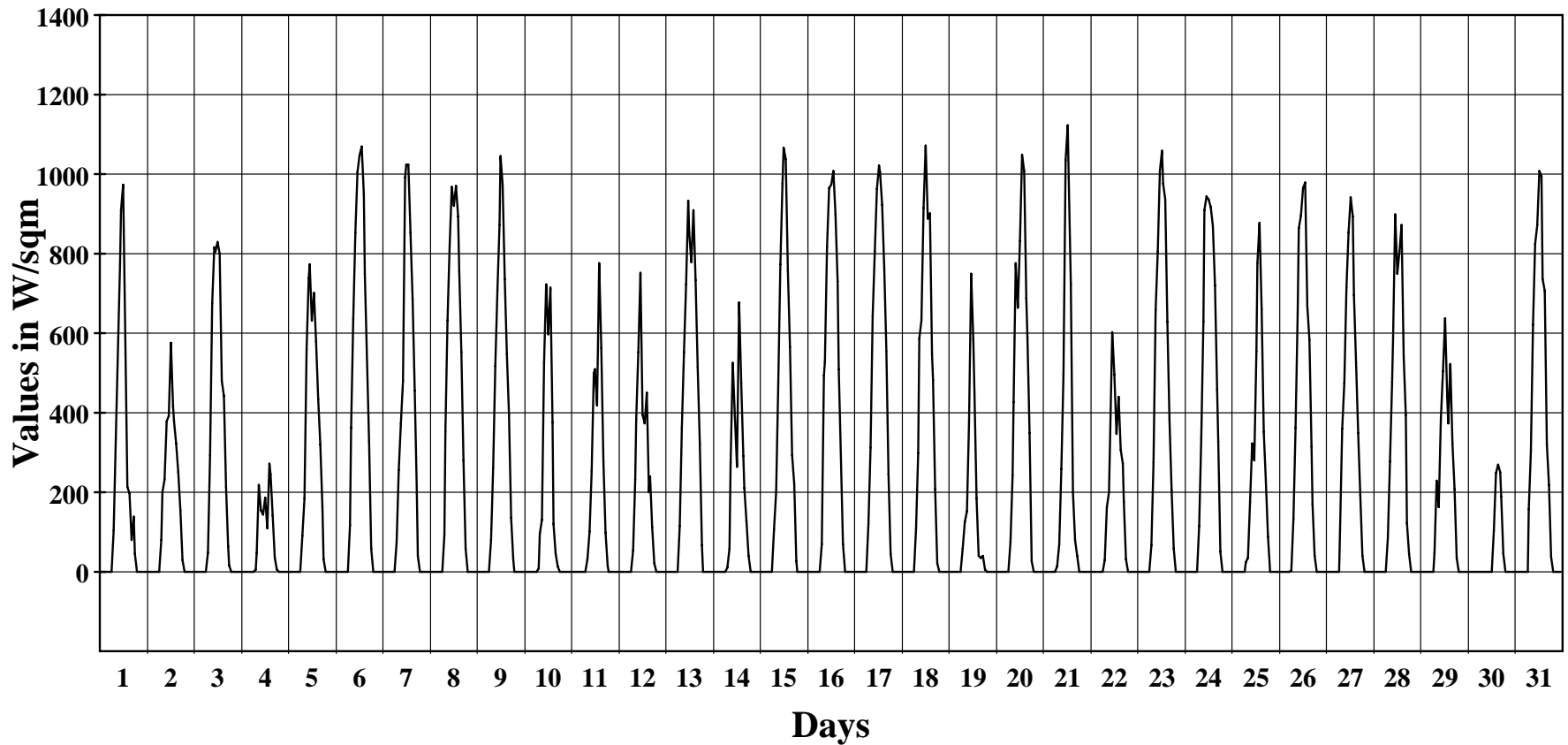
March 2013

Hourly Averages Graph (Irradiation)

SITE 8208

Jaluit

Average Hourly Values



Average Value: 220.6

Site Information:

Project: Wind Monitoring
Location: Jaluit High School
Elevation: 4

Sensor on channel 10:

Licor Pyran W/sqm
Height: 3 m
Serial #: SN:

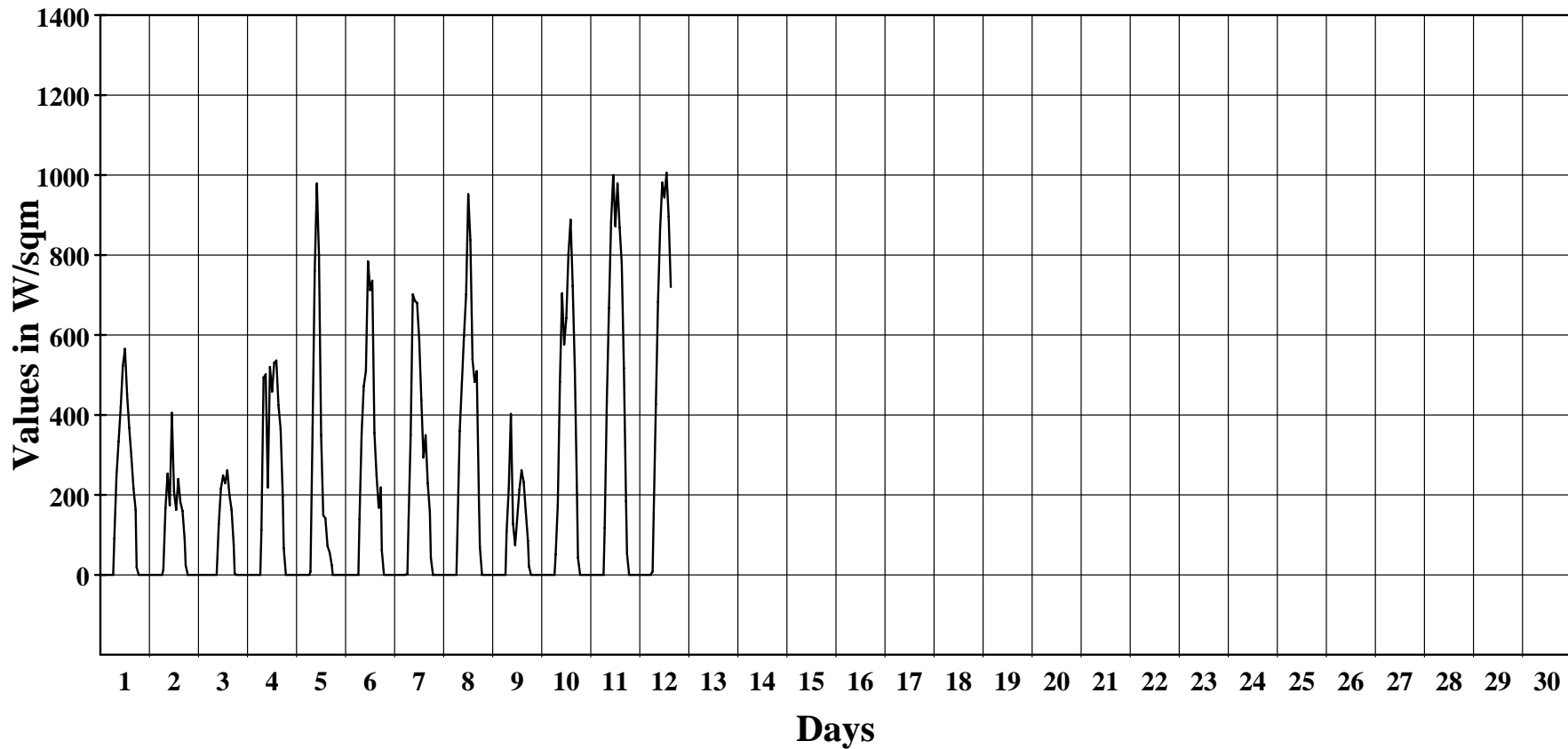
April 2013

Hourly Averages Graph (Irradiation)

SITE 8208

Jaluit

Average Hourly Values



Average Value: 187.6

Site Information:

Project: Wind Monitoring
Location: Jaluit High School
Elevation: 4

Sensor on channel 11:

BP-20 Barom. mb
Height: 2 m
Serial #: SN:

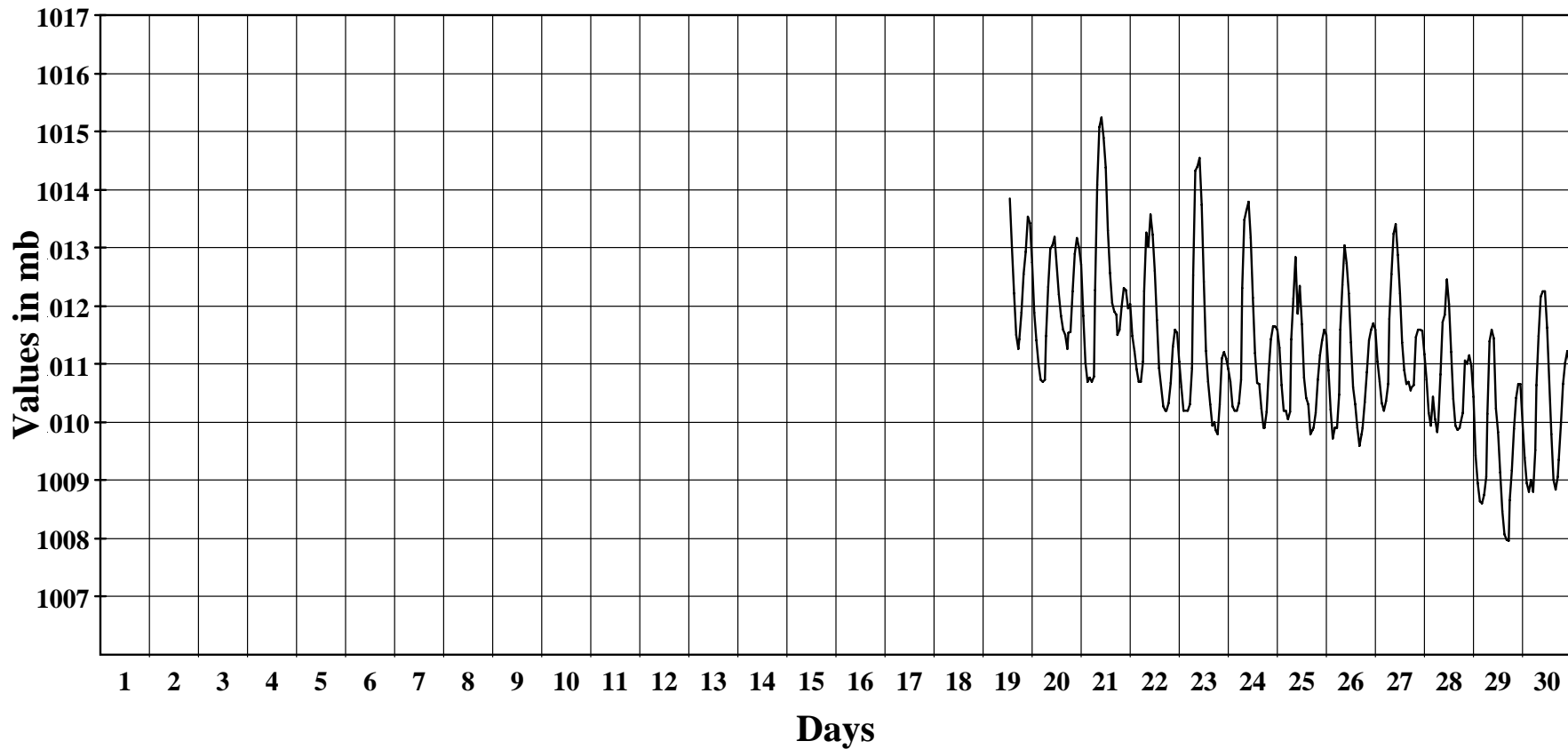
June 2012

Hourly Averages Graph (Pressure)

SITE 8208

Jaluit

Average Hourly Values



Average Value: 1011.2

Site Information:

Project: Wind Monitoring
Location: Jaluit High School
Elevation: 4

Sensor on channel 11:

BP-20 Barom. mb
Height: 2 m
Serial #: SN:

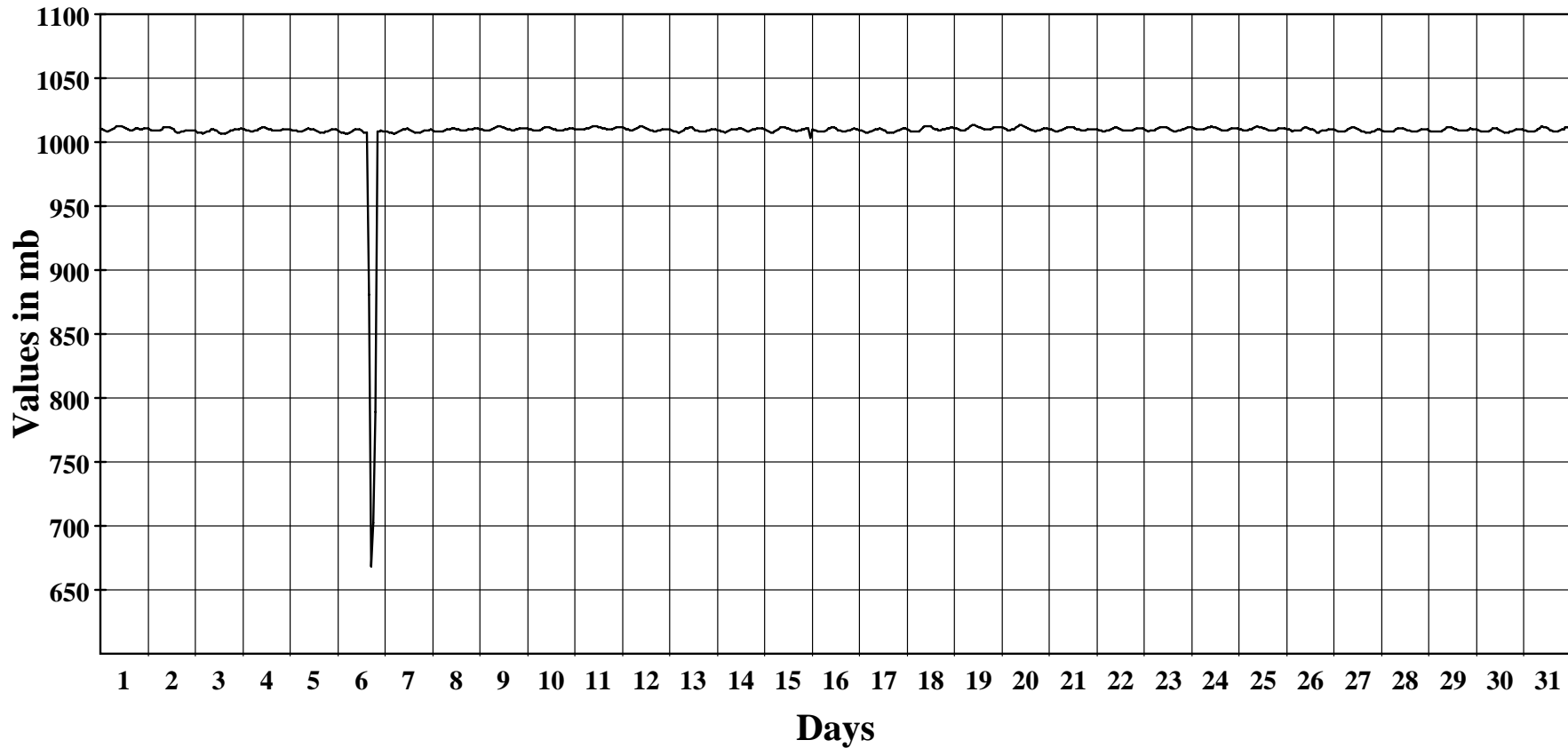
July 2012

Hourly Averages Graph (Pressure)

SITE 8208

Jaluit

Average Hourly Values



Average Value: 1008.4

Site Information:

Project: Wind Monitoring
Location: Jaluit High School
Elevation: 4

Sensor on channel 11:

BP-20 Barom. mb
Height: 2 m
Serial #: SN:

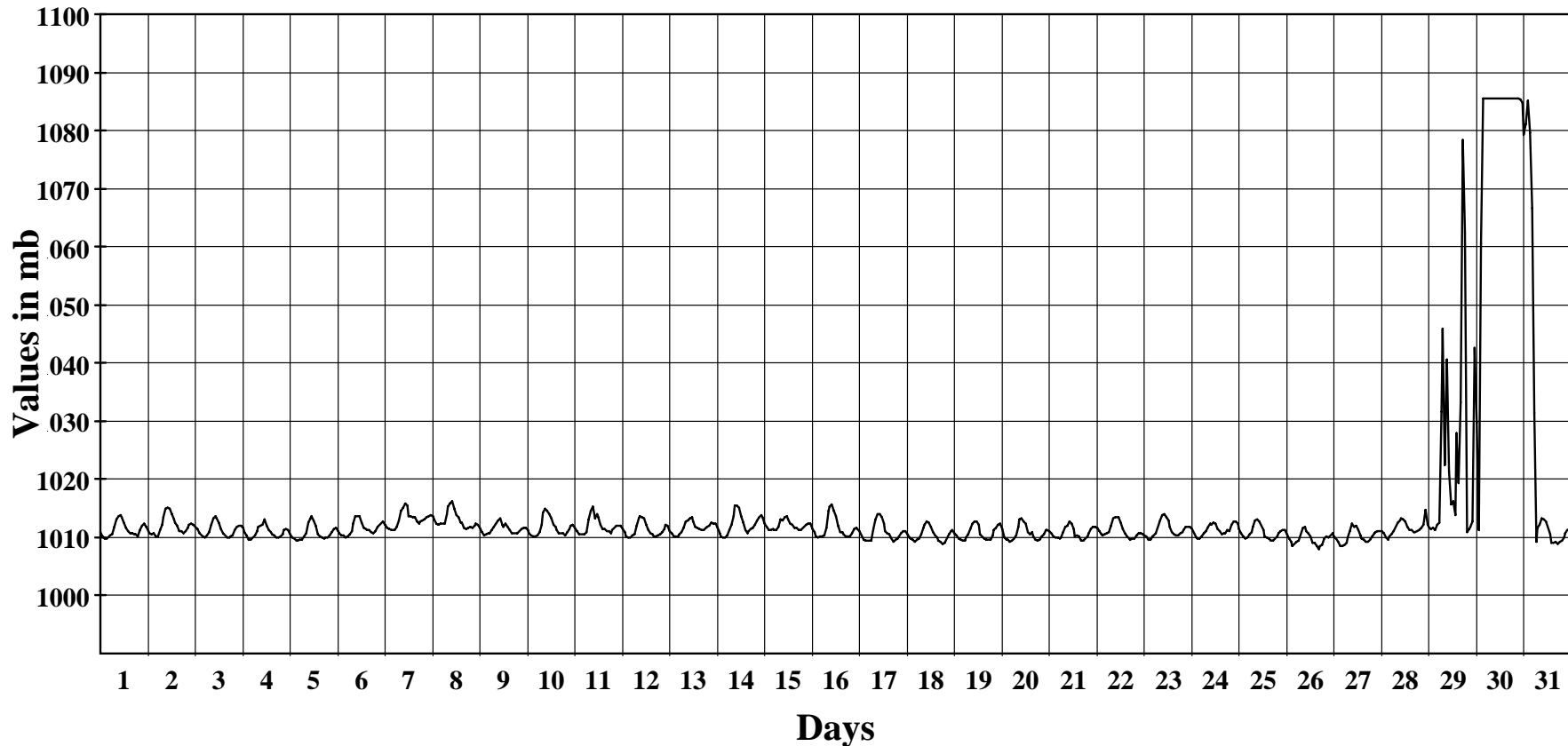
August 2012

Hourly Averages Graph (Pressure)

SITE 8208

Jaluit

Average Hourly Values



Average Value: 1014.4

Site Information:

Project: Wind Monitoring
Location: Jaluit High School
Elevation: 4

Sensor on channel 11:

BP-20 Barom. mb
Height: 2 m
Serial #: SN:

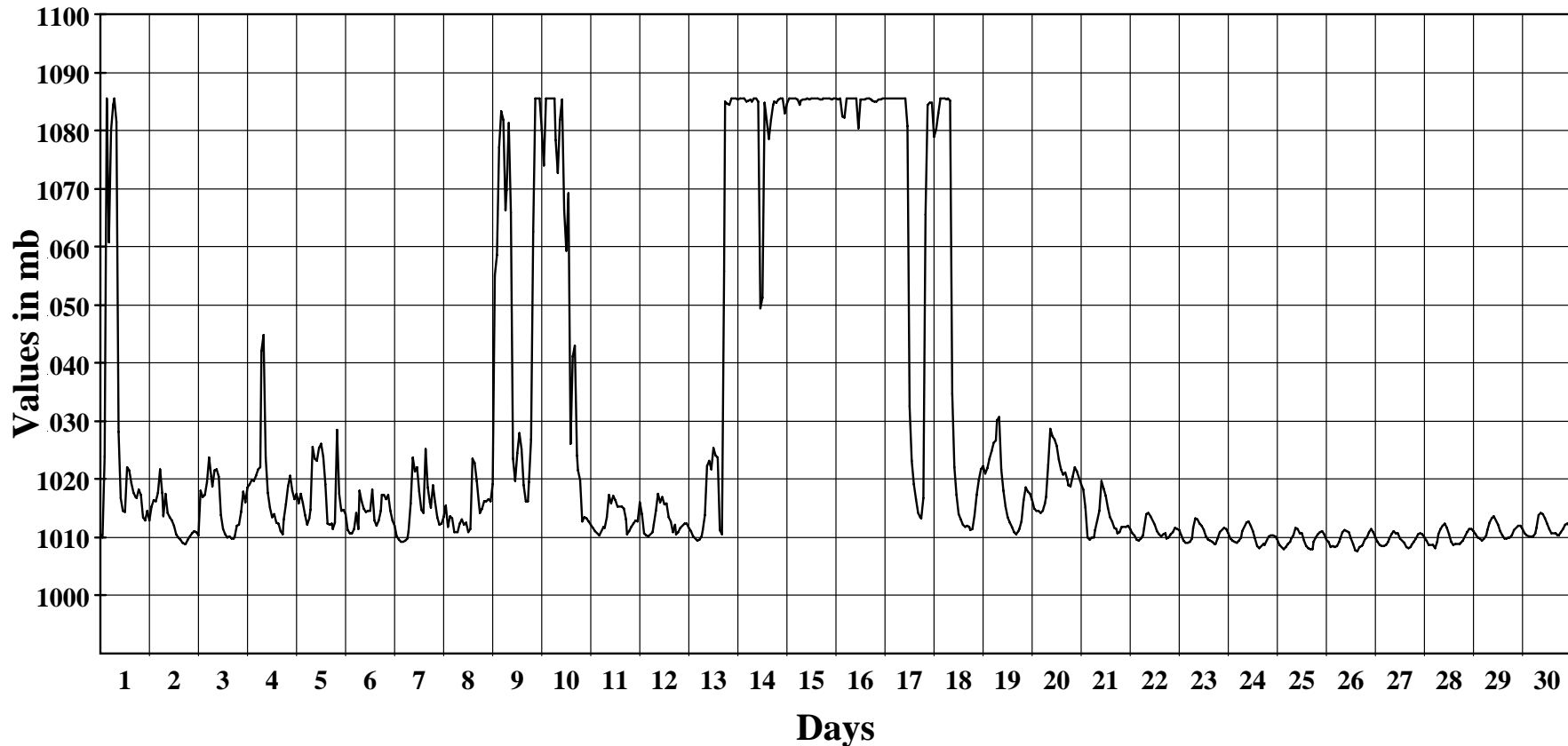
September 2012

Hourly Averages Graph (Pressure)

SITE 8208

Jaluit

Average Hourly Values



Average Value: 1026.9

Site Information:

Project: Wind Monitoring
Location: Jaluit High School
Elevation: 4

Sensor on channel 11:

BP-20 Barom. mb
Height: 2 m
Serial #: SN:

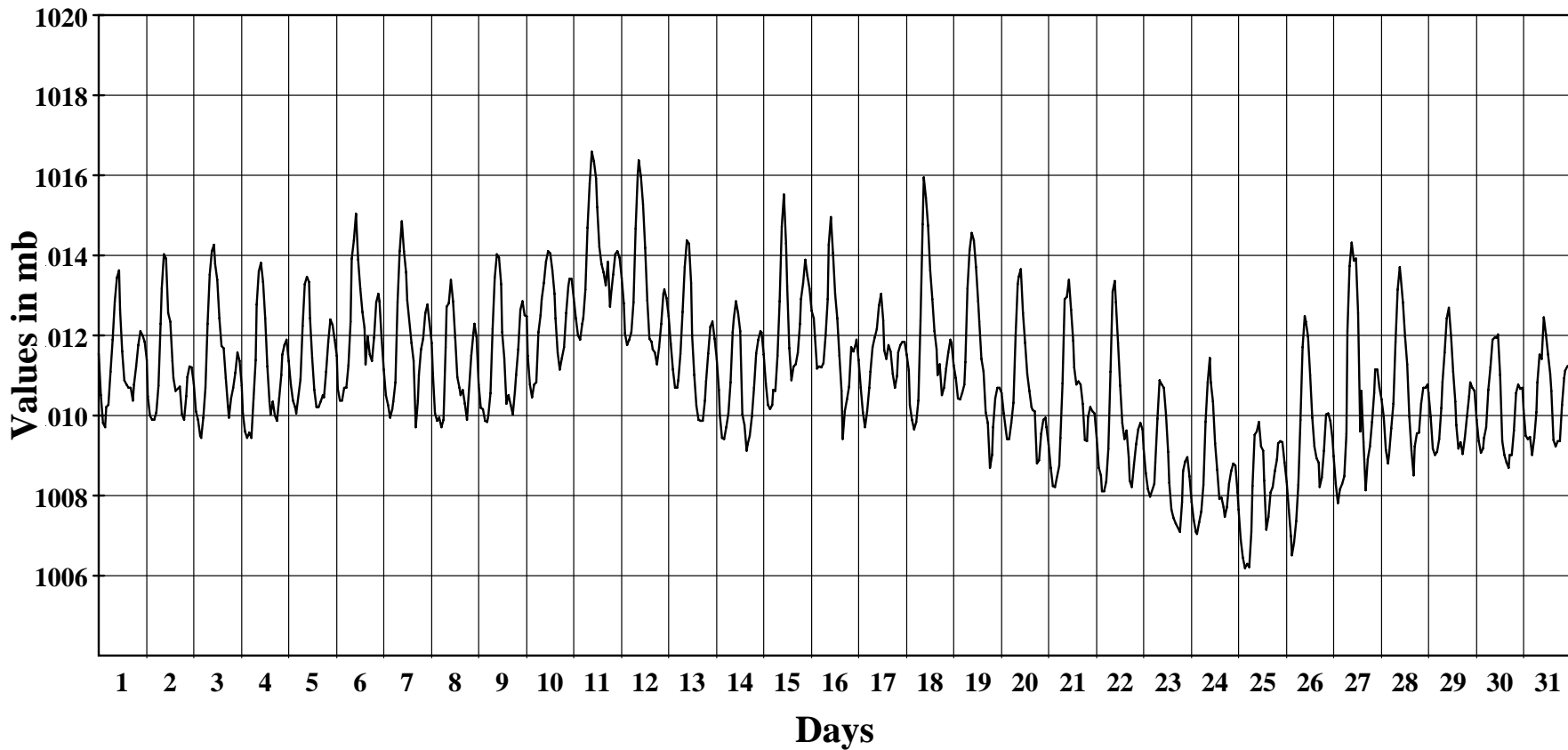
October 2012

Hourly Averages Graph (Pressure)

SITE 8208

Jaluit

Average Hourly Values



Average Value: 1011.0

Site Information:

Project: Wind Monitoring
Location: Jaluit High School
Elevation: 4

Sensor on channel 11:

BP-20 Barom. mb
Height: 2 m
Serial #: SN:

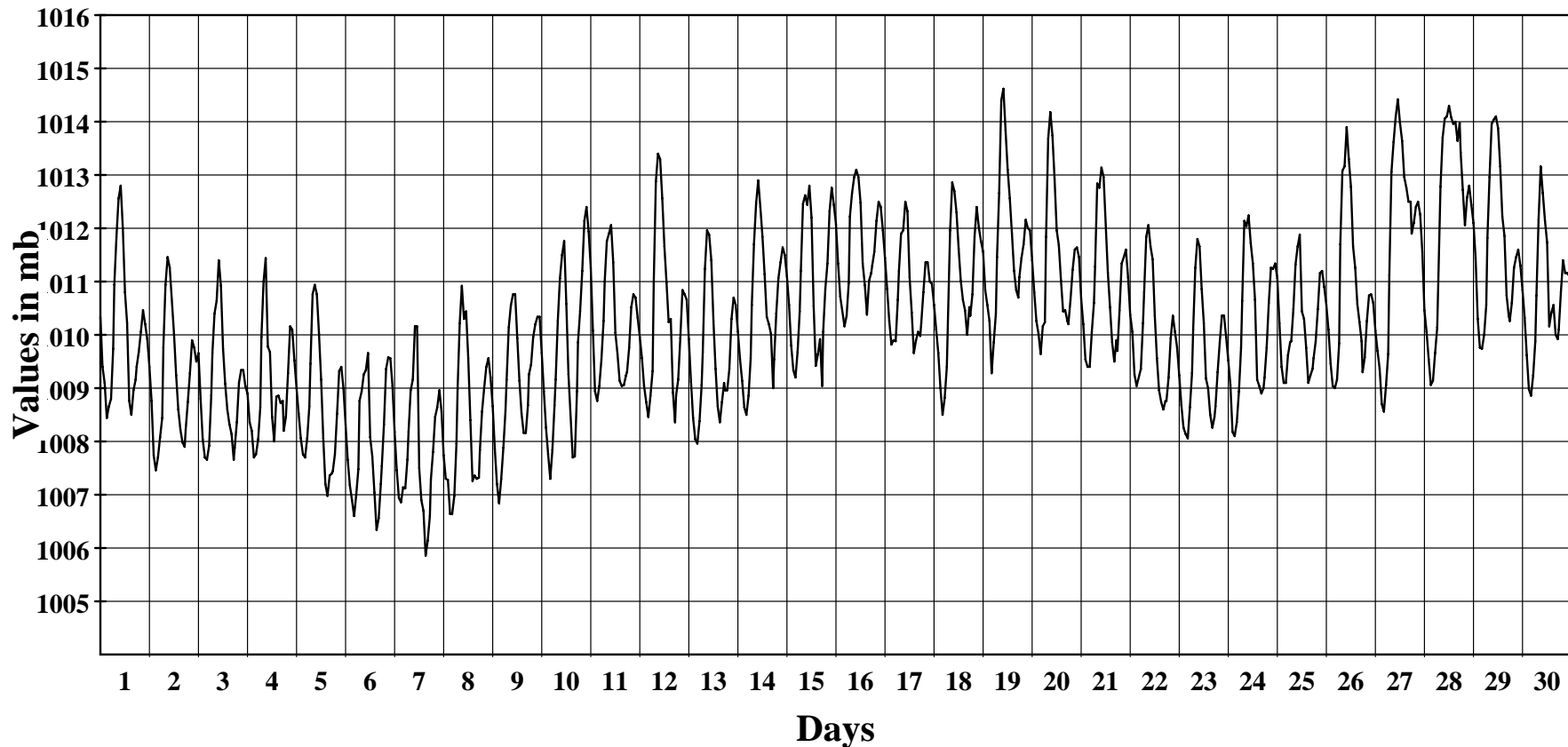
November 2012

Hourly Averages Graph (Pressure)

SITE 8208

Jaluit

Average Hourly Values



Average Value: 1010.1

Site Information:

Project: Wind Monitoring
Location: Jaluit High School
Elevation: 4

Sensor on channel 11:

BP-20 Barom. mb
Height: 2 m
Serial #: SN:

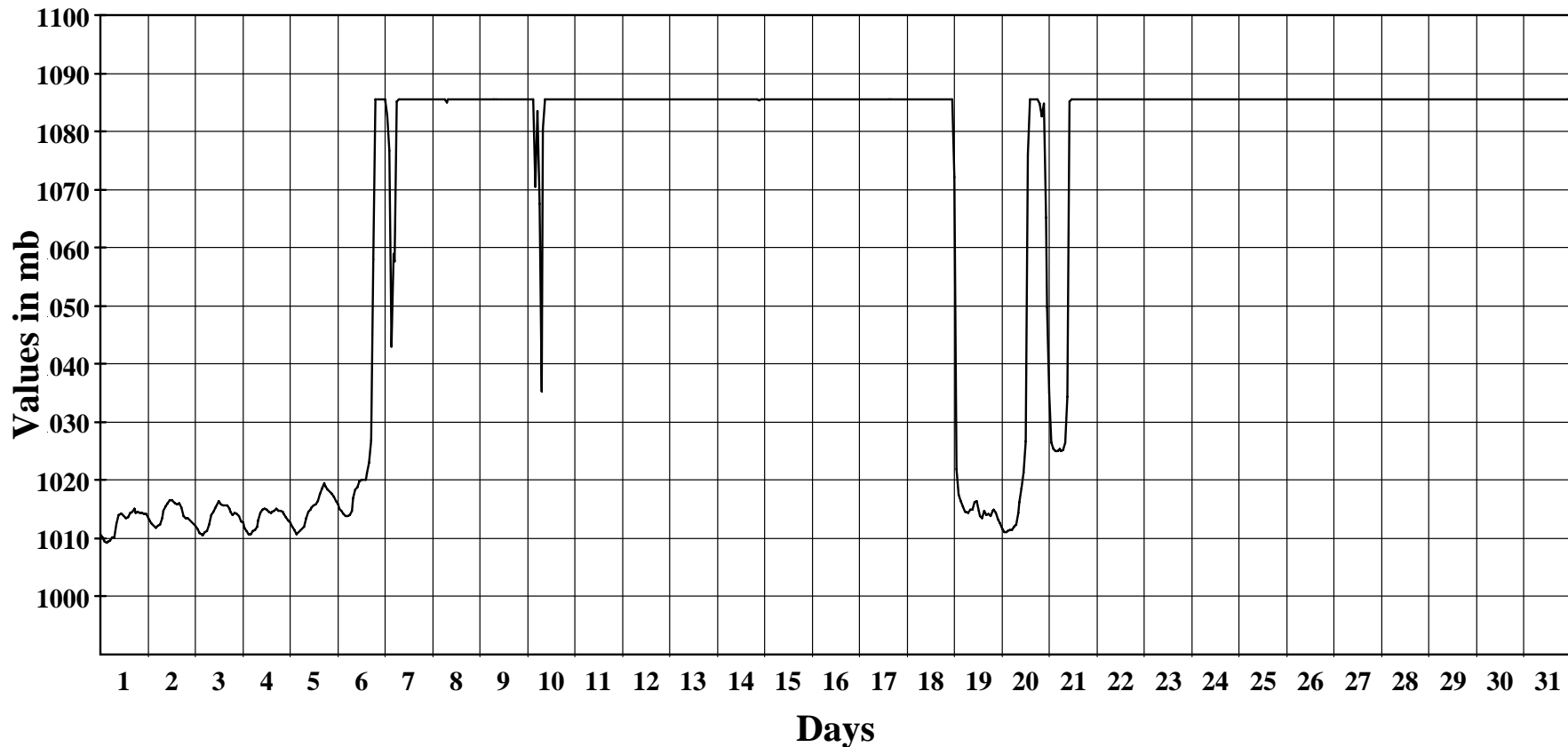
December 2012

Hourly Averages Graph (Pressure)

SITE 8208

Jaluit

Average Hourly Values



Average Value: 1067.8

Site Information:

Project: Wind Monitoring
Location: Jaluit High School
Elevation: 4

Sensor on channel 11:

BP-20 Barom. mb
Height: 2 m
Serial #: SN:

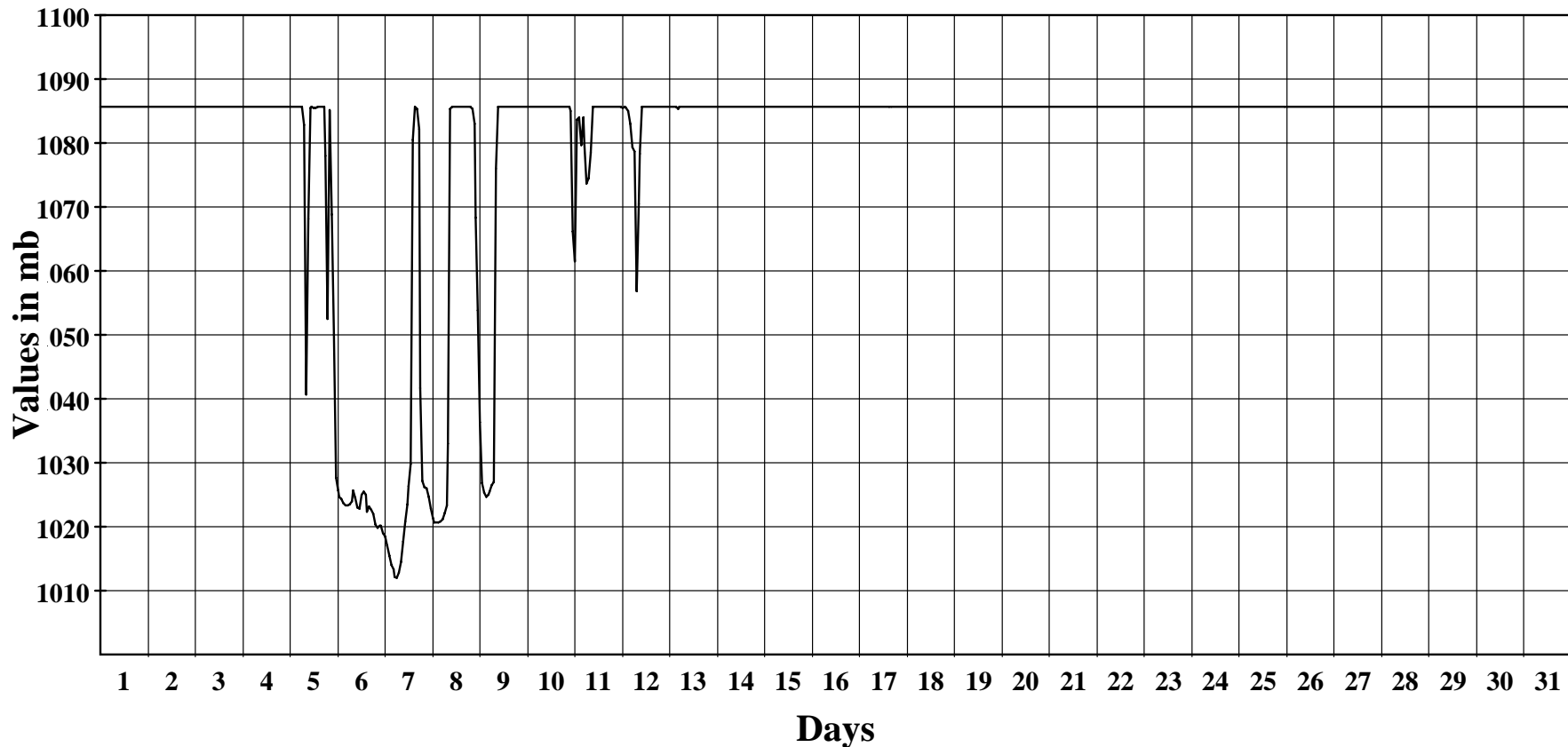
January 2013

Hourly Averages Graph (Pressure)

SITE 8208

Jaluit

Average Hourly Values



Average Value: 1079.9

Site Information:

Project: Wind Monitoring
Location: Jaluit High School
Elevation: 4

Sensor on channel 11:

BP-20 Barom. mb
Height: 2 m
Serial #: SN:

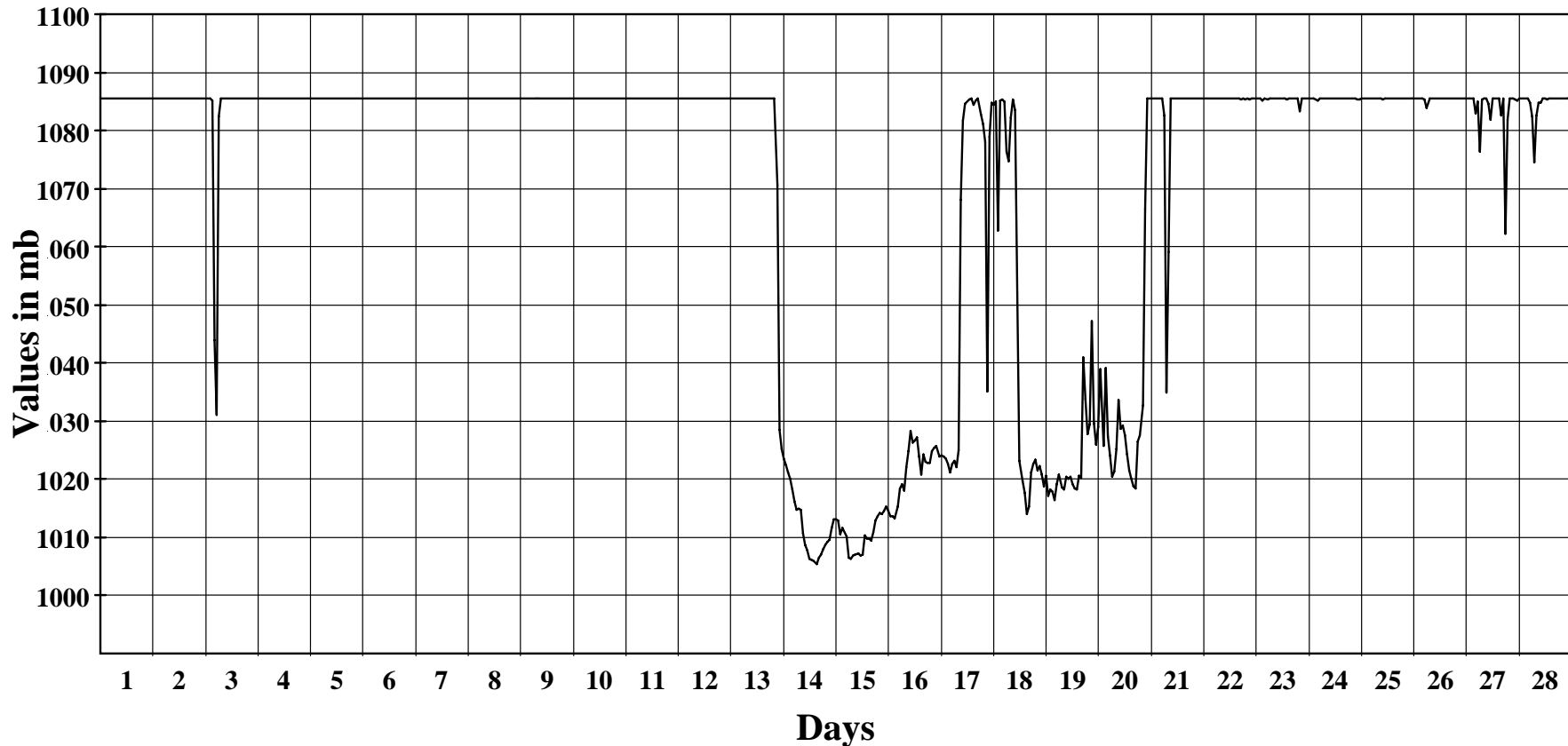
February 2013

Hourly Averages Graph (Pressure)

SITE 8208

Jaluit

Average Hourly Values



Average Value: 1071.1

Site Information:

Project: Wind Monitoring
Location: Jaluit High School
Elevation: 4

Sensor on channel 11:

BP-20 Barom. mb
Height: 2 m
Serial #: SN:

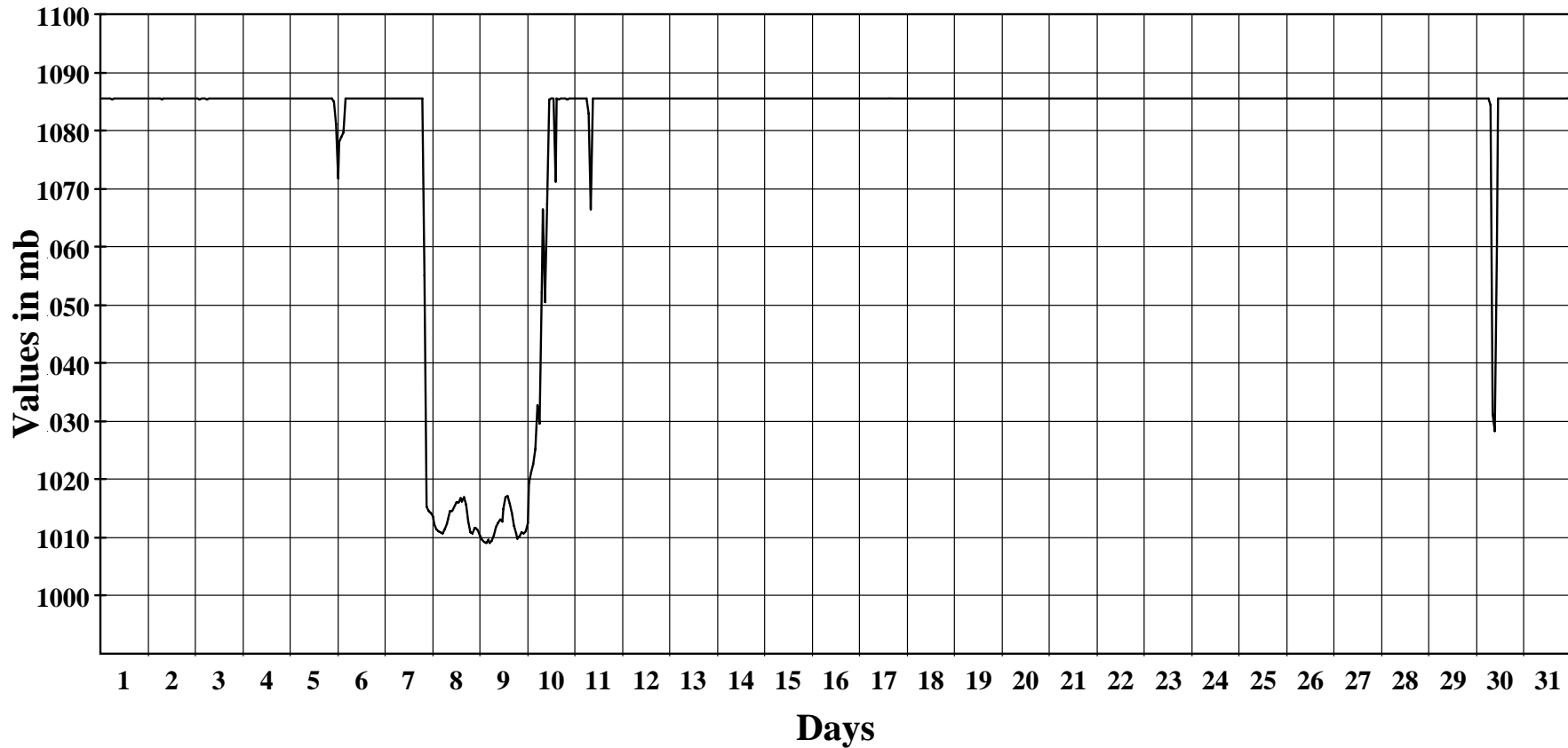
March 2013

Hourly Averages Graph (Pressure)

SITE 8208

Jaluit

Average Hourly Values



Average Value: 1079.5

Site Information:

Project: Wind Monitoring
Location: Jaluit High School
Elevation: 4

Sensor on channel 11:

BP-20 Barom. mb
Height: 2 m
Serial #: SN:

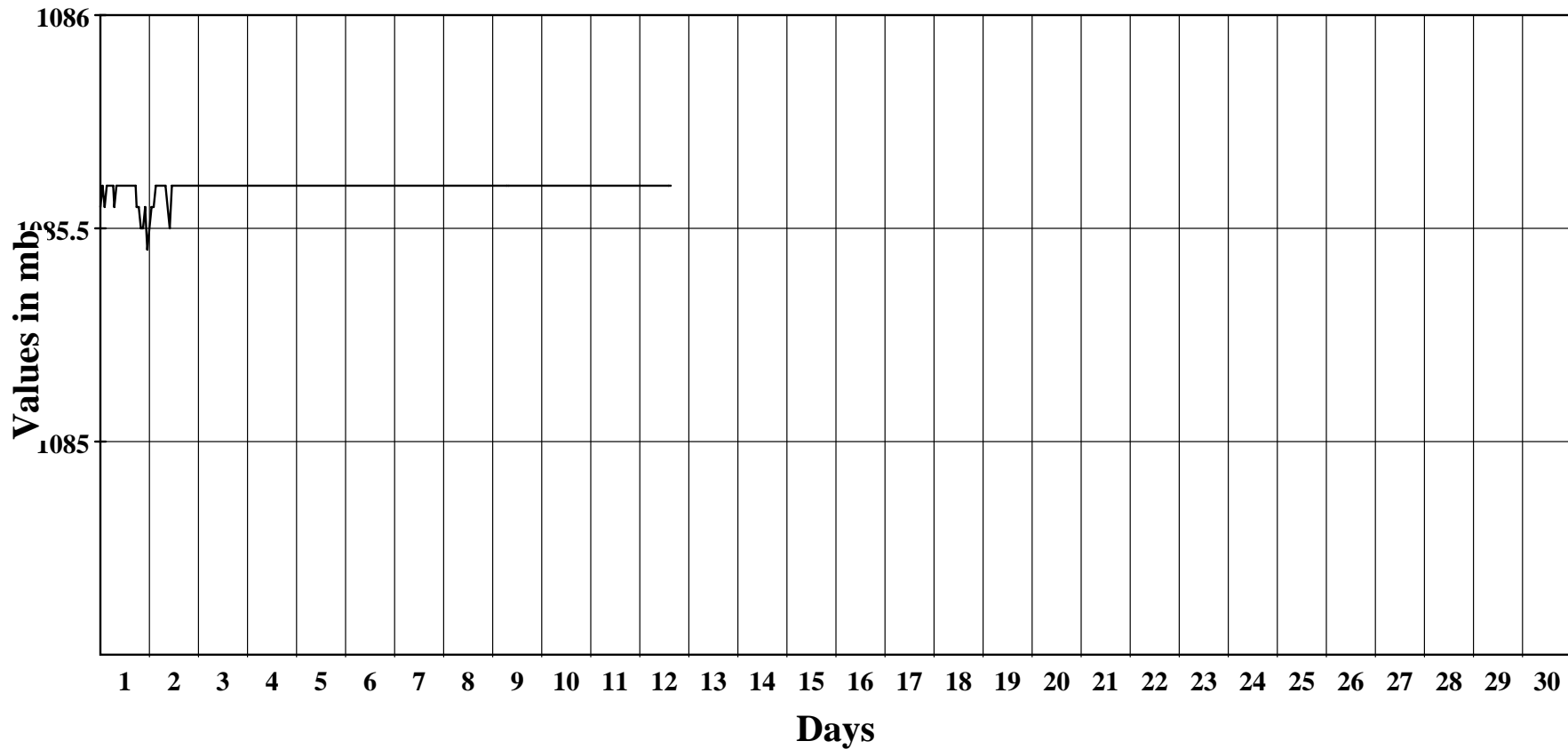
April 2013

Hourly Averages Graph (Pressure)

SITE 8208

Jaluit

Average Hourly Values



Average Value: 1085.6